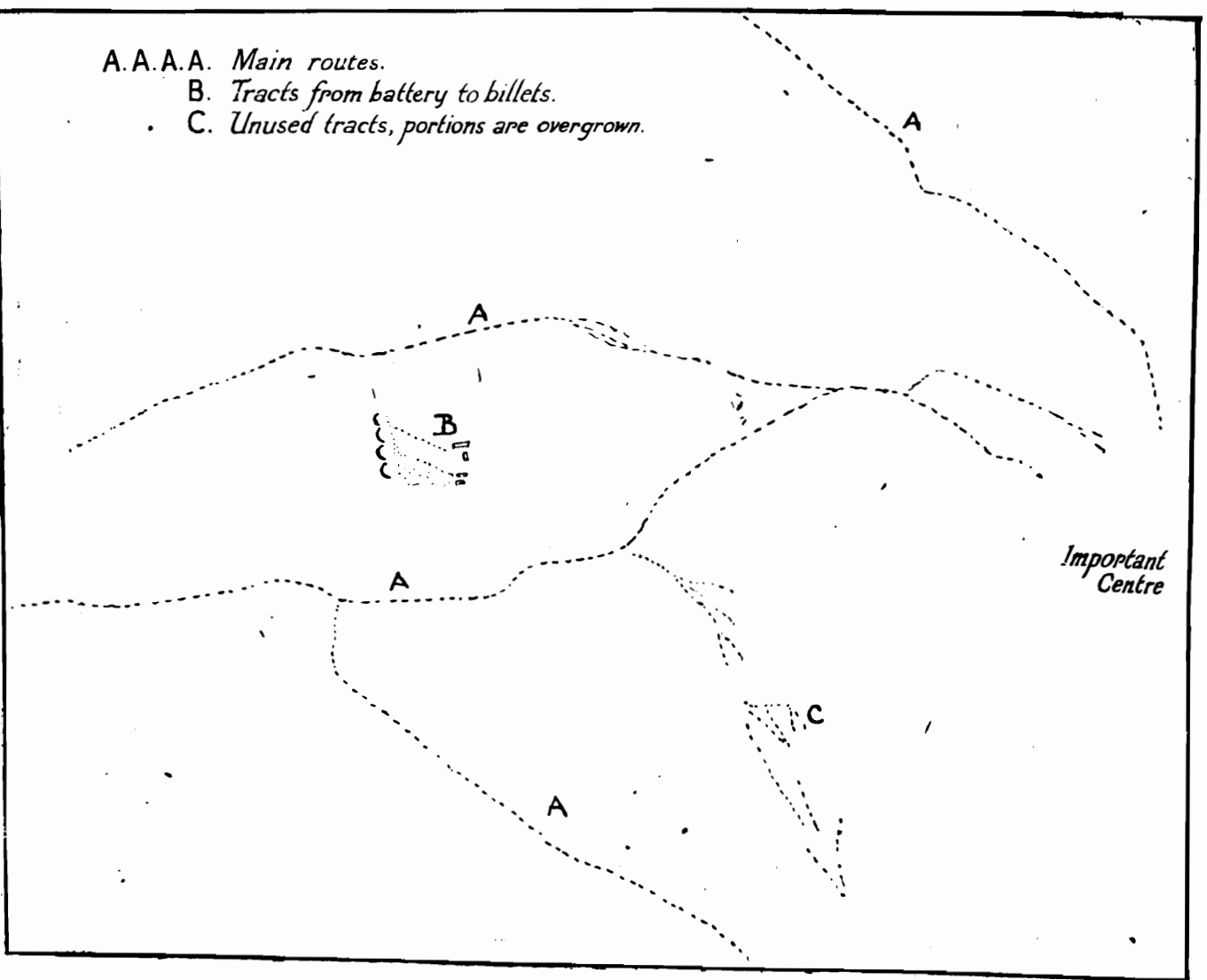


TRACKS.

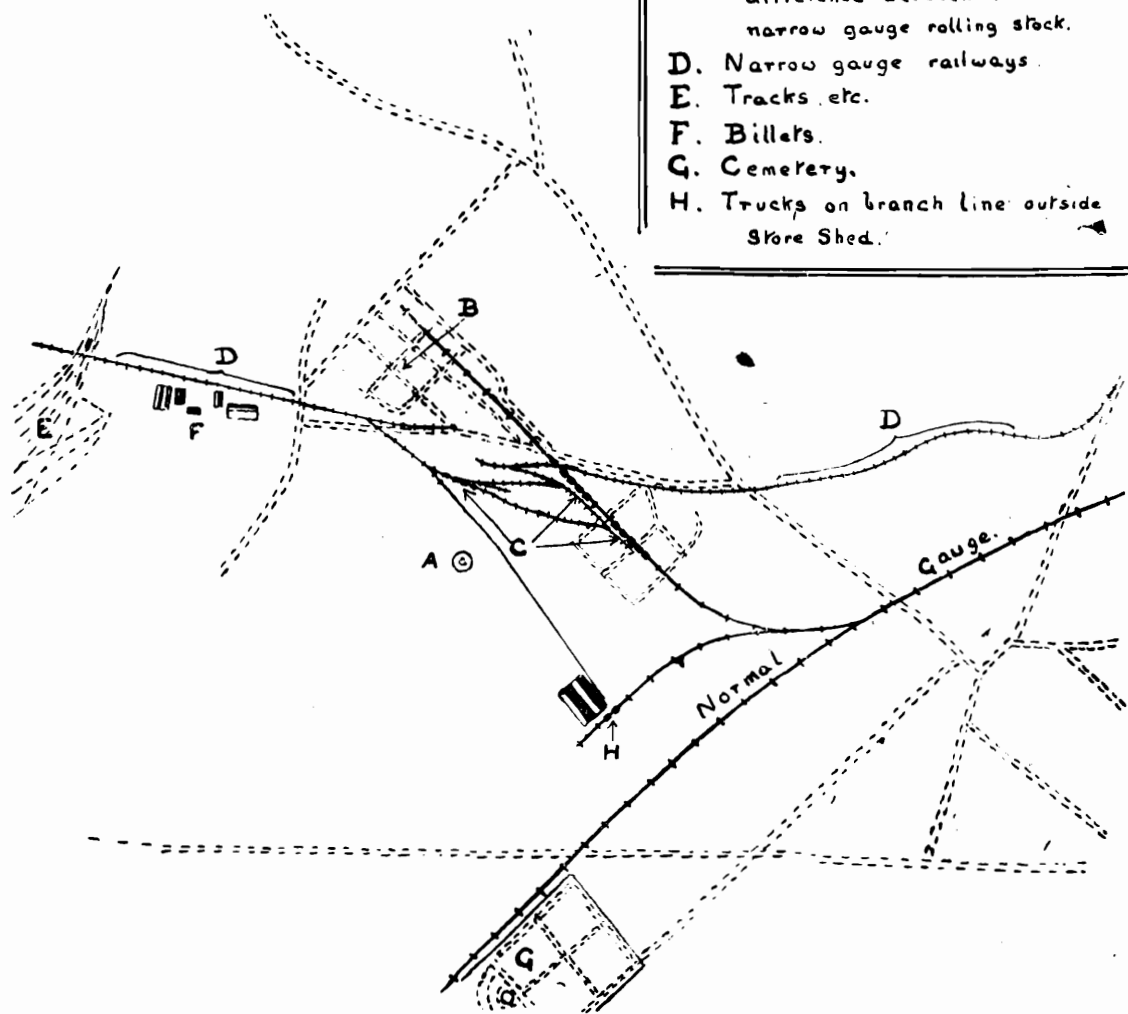
IMPORTANT SUPPLY CENTRE.

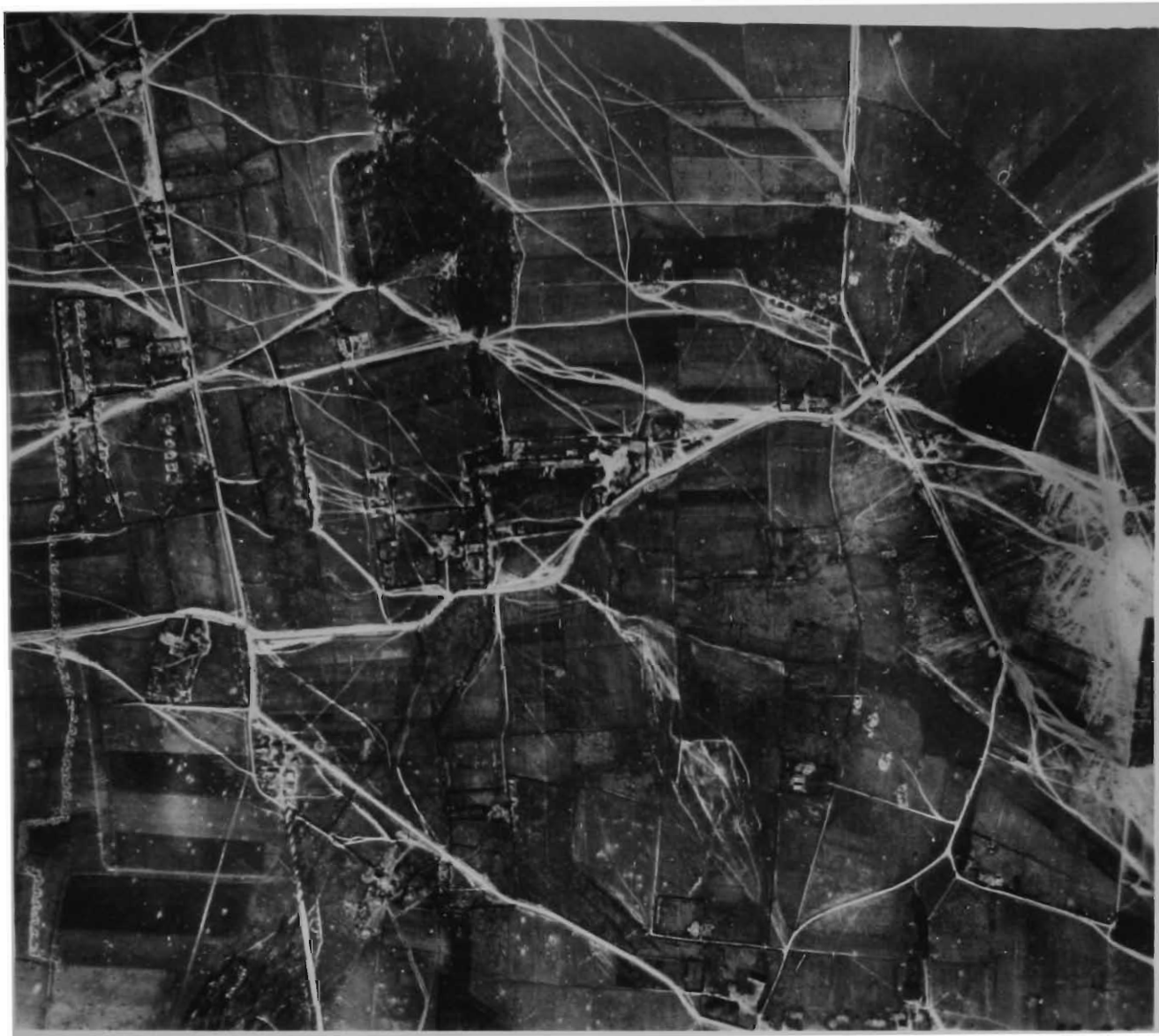
AREA :—Boesinghe to Ypres-Comines Canal.

- A.A.A.A. Main routes.
- B. Tracts from battery to billets.
- C. Unused tracts, portions are overgrown.



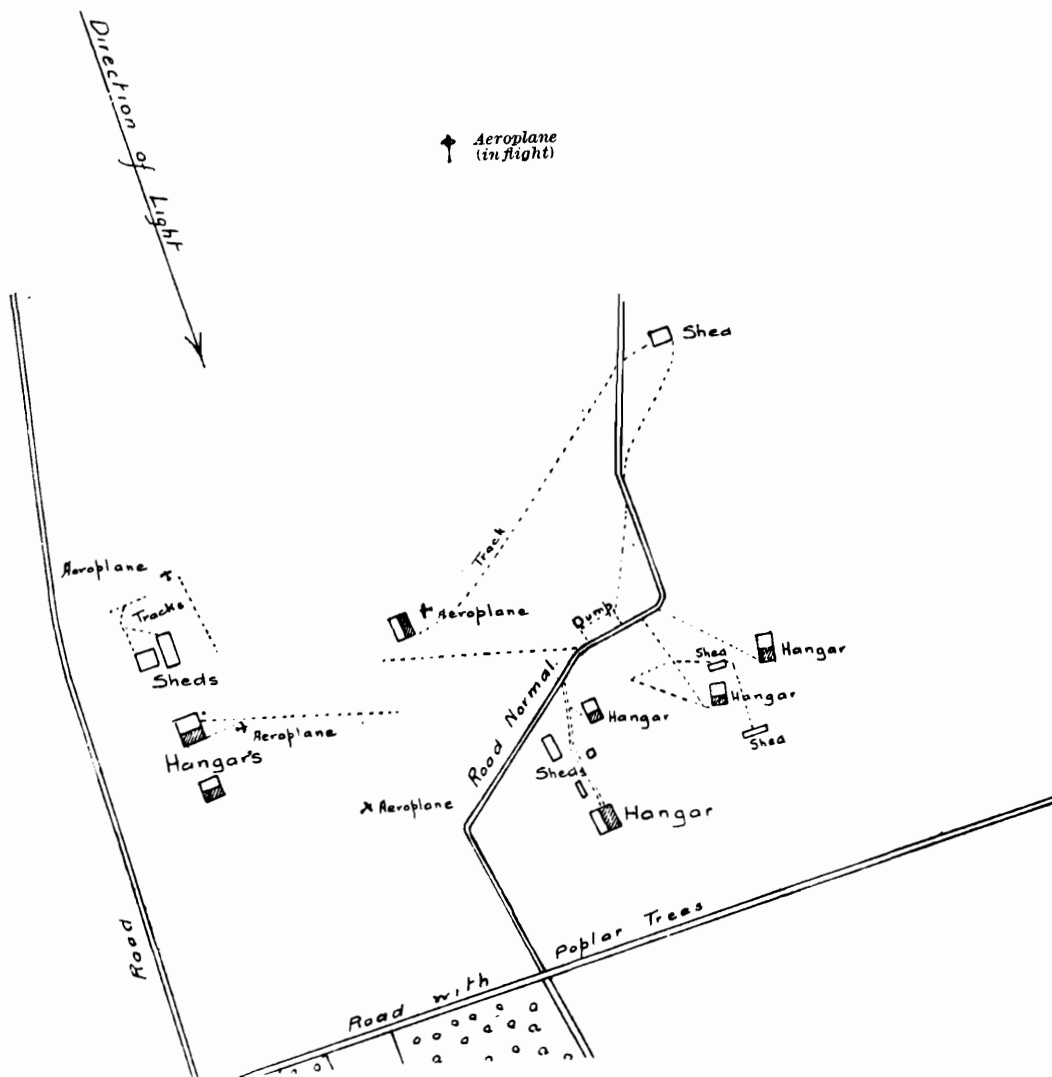
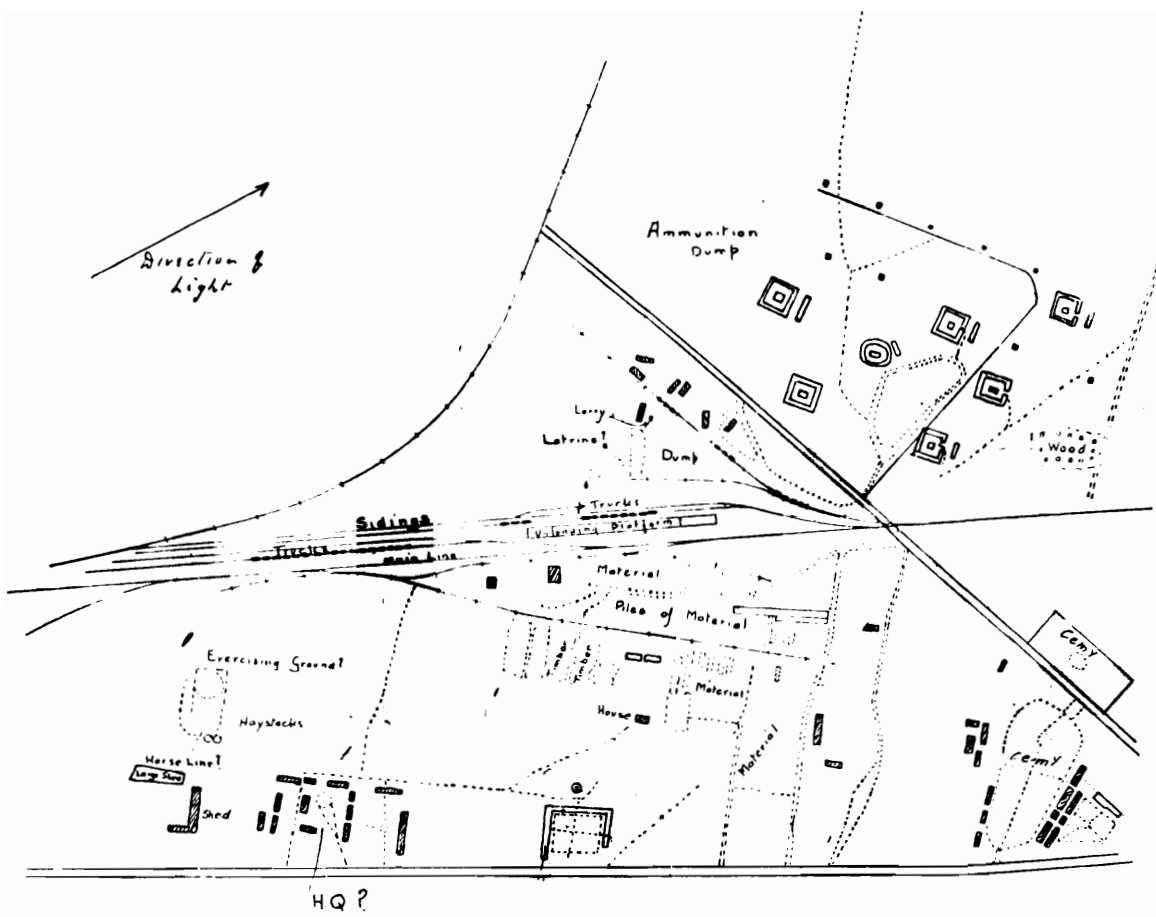
- A. Anti-Aircraft Gun.
- B. Material stored in open.
- C. Sidings with trucks, showing difference between normal and narrow gauge rolling stock.
- D. Narrow gauge railways.
- E. Tracks etc.
- F. Billets.
- G. Cemetery.
- H. Trucks on branch line outside Store Shed.





SUPPLY CENTRE.
HOSTILE AERODROME.

AREA:—Boesinghe to Ypres-Comines Canal.



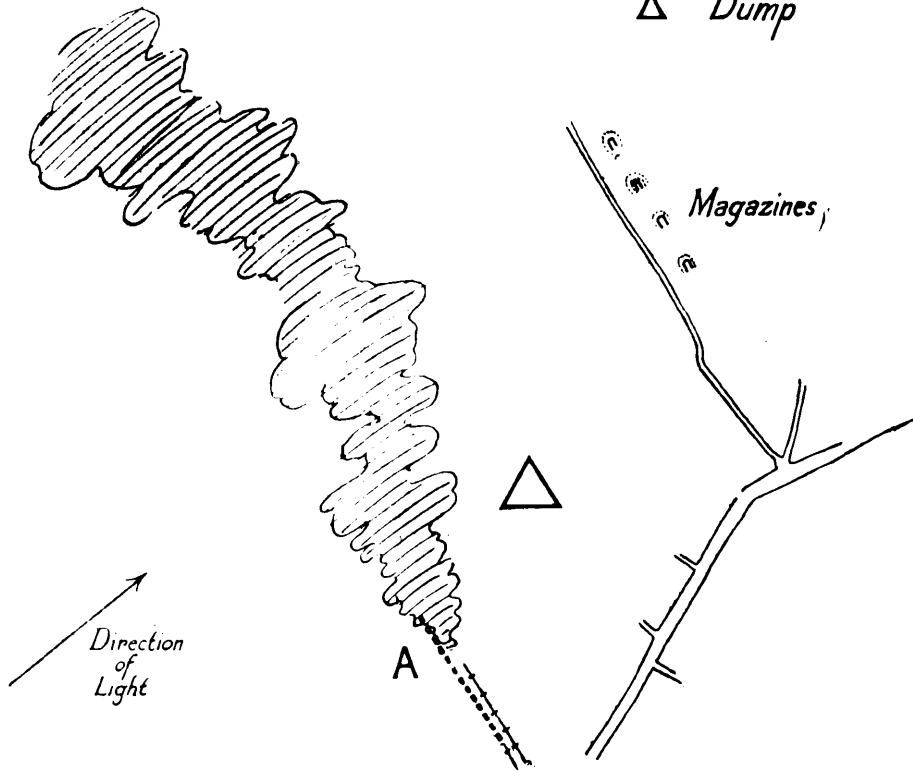


BOMBING RAIDS.

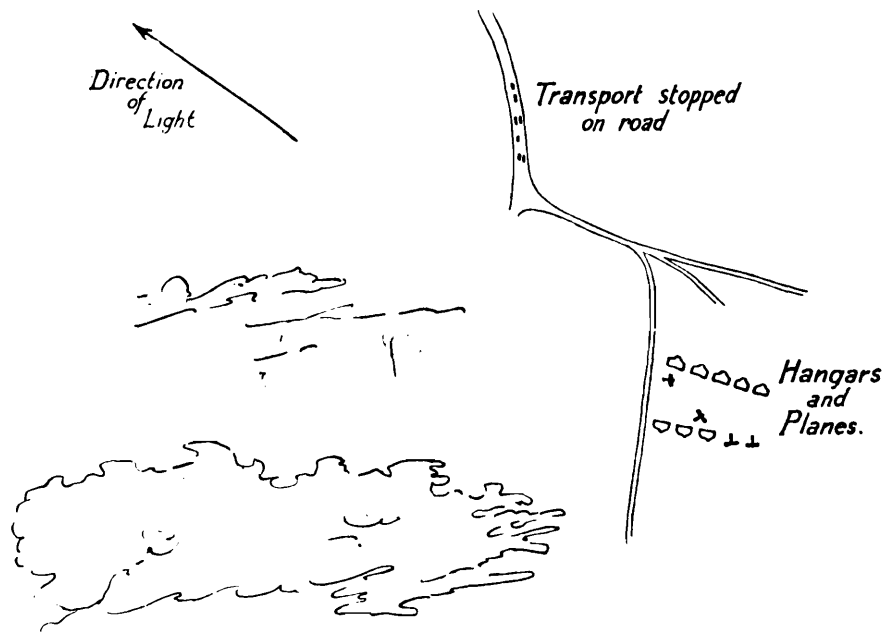
AREA :—River Scarpe to River Ancre.

Bombing Raids

- A. Train hit and burning
- △ Dump



Landing T





OBLIQUE AND VERTICAL PHOTOGRAPHS
OF THE SAME AREA.

AREA :—River Ancre to River Somme.

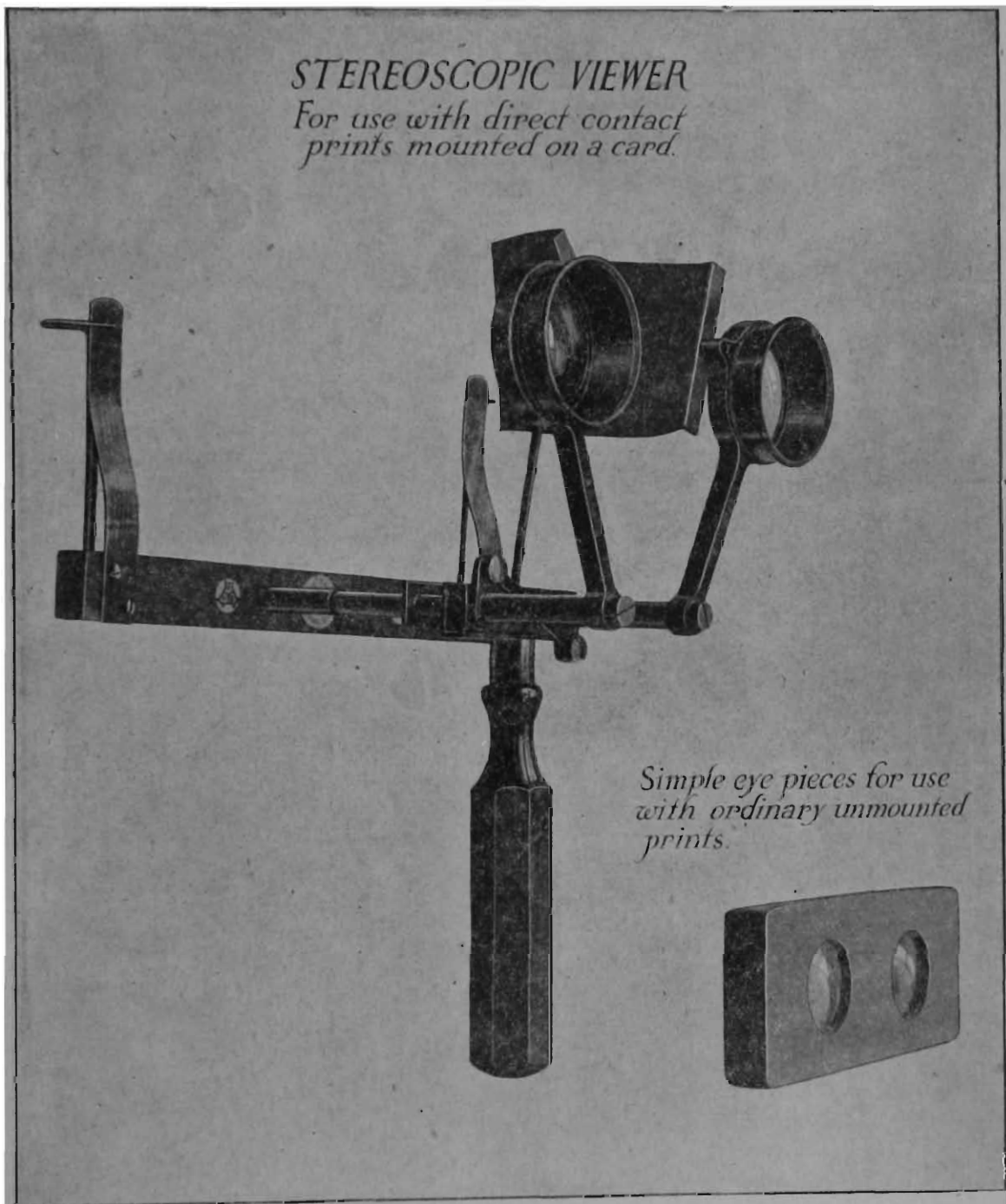


1. Butte de Warlencourt.
2. Quarry.
3. Dump.
4. Normal gauge line from dump to Bapaume.
5. Trench.



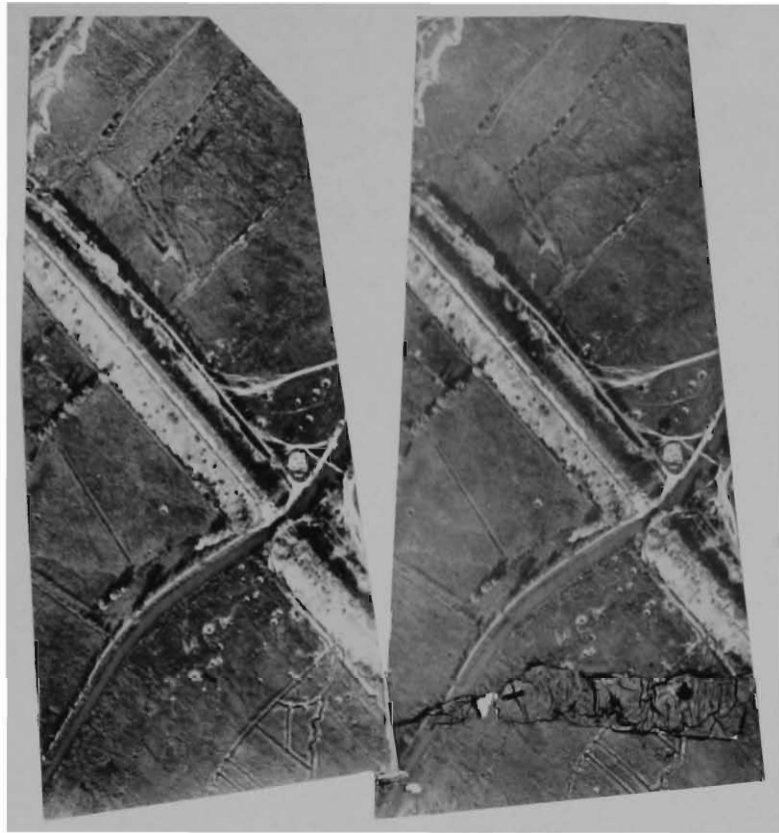
Example of Oblique and Vertical Photographs covering the same area.

STEREOSCOPIC VIEWER.



STEREOSCOPIC SLIDES.

*Direct contact prints mounted
for the stereoscopic viewer.*



*Ordinary enlargements mounted
for the simple eye pieces.*

