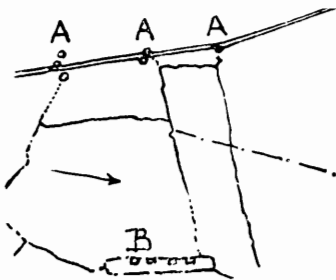
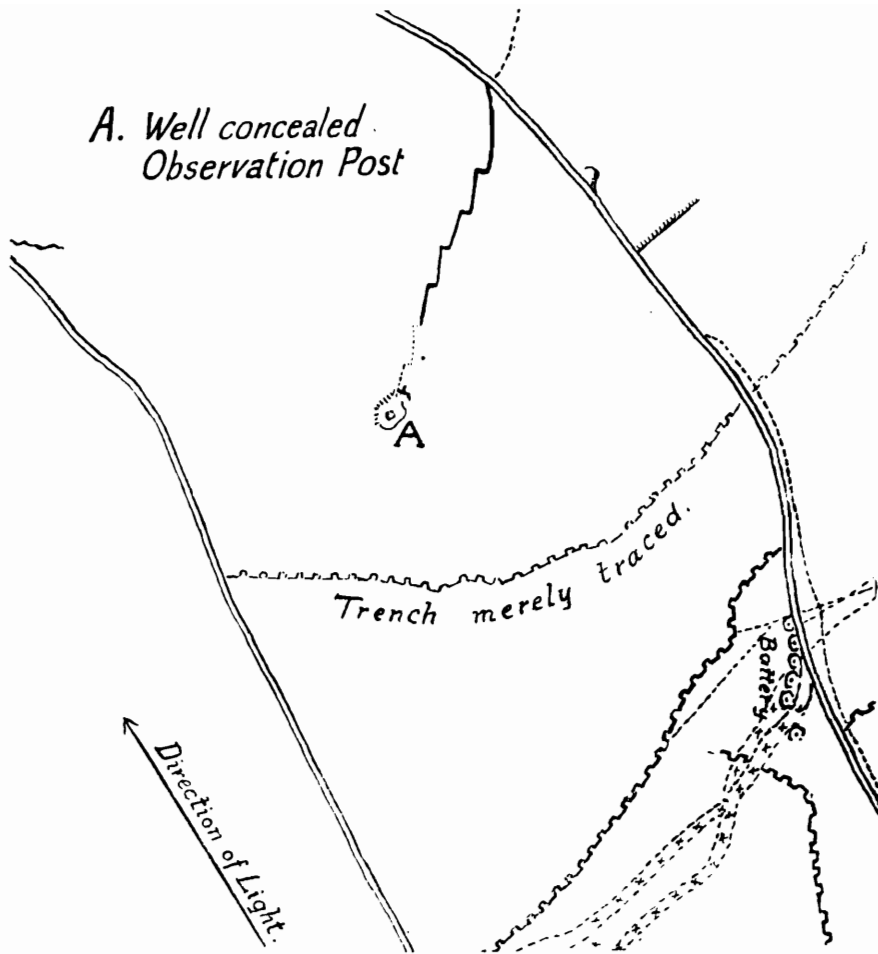


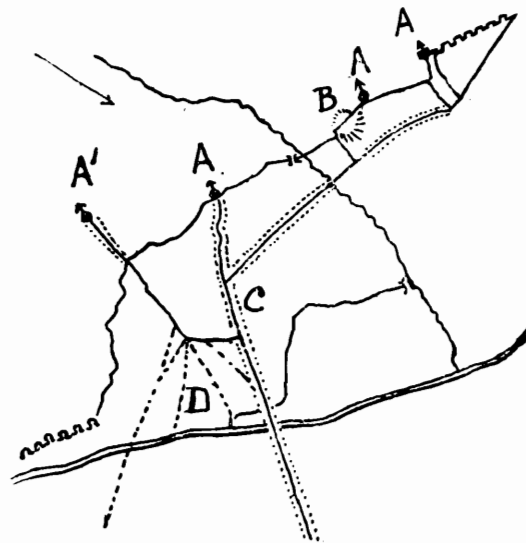
OBSERVATION POSTS.

AREA :—River Scarpe to River Ancre.

A. Well concealed
Observation Post



A.A.A.—Haystacks used as
observation posts.
B.—Battery.



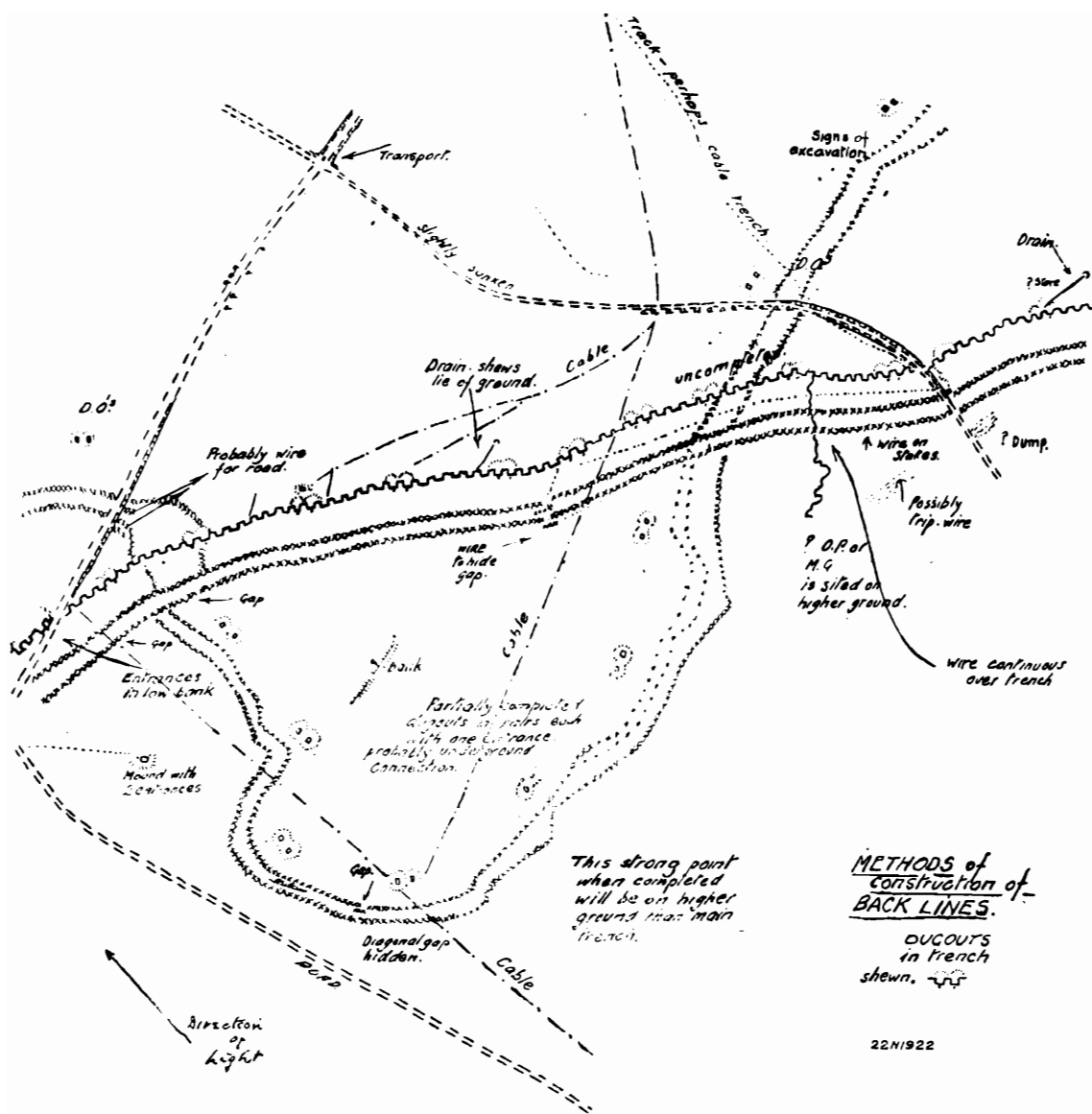
A.A.A.A.—Observation posts.
B.—Dug-out.
C.—Covered Trench for Cables and personnel.
D.—Tracks where observers have jumped into
the trench just before reaching the sky
line. These point to the observation post
A' being the most used.



PREPARATION AGAINST ATTACK.

AREA :—River Ancre to River Somme.

La Bassée Canal to River Scarpe.

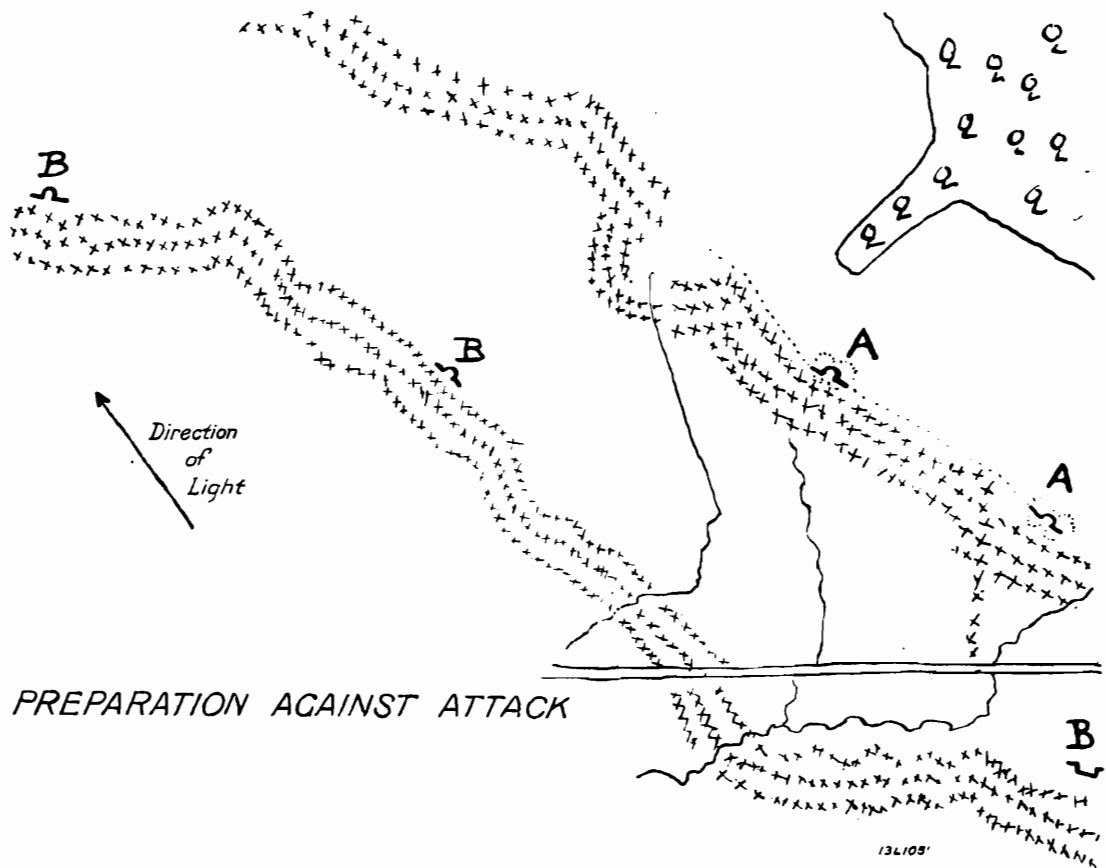


This strong point when completed will be on higher ground than main trench.

METHODS of construction of BACK LINES.

DUG-OUTS in trench shown.

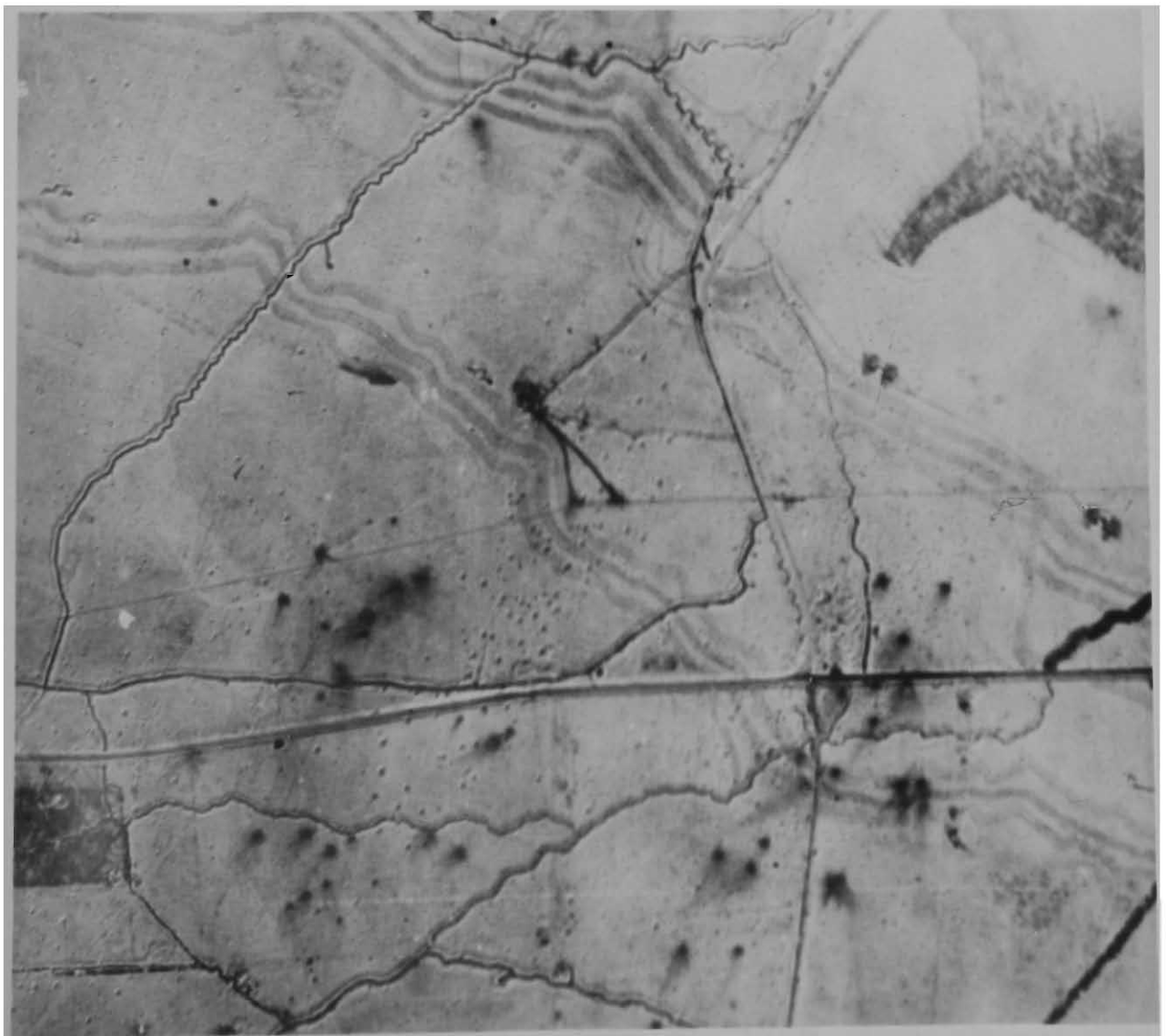
22/1/22



PREPARATION AGAINST ATTACK

New lines of wire erected before the trench is dug. At A.A. trace of trench and traverses with dug-outs commenced. At B.B. traverses dug to mark course of new trench.

13/105'

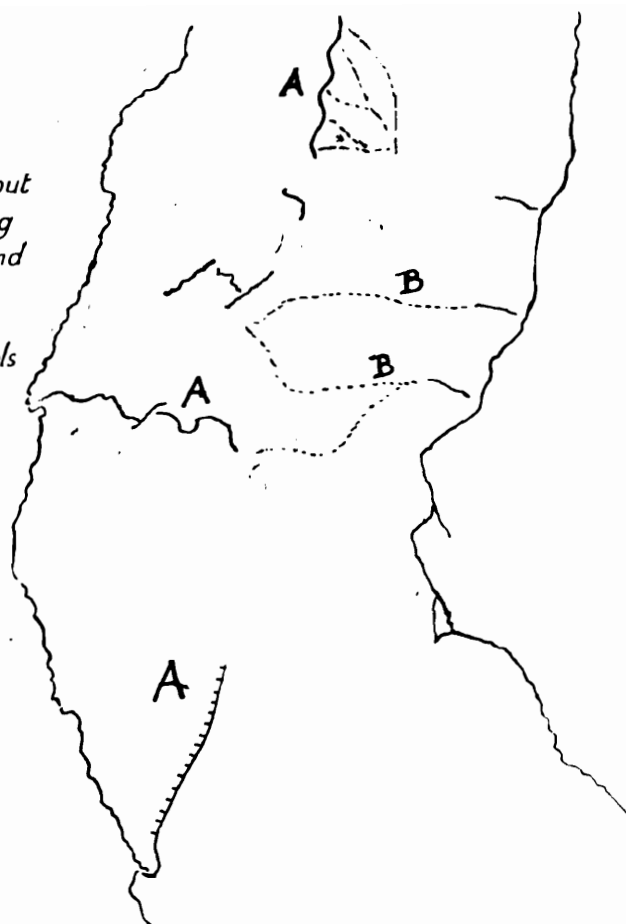


INDICATIONS OF A RAID OR AN ATTACK.

AREA :—La Bassée Canal to River Scarpe.

A. Saps pushed out and trenches dug to hold raiding and covering parties

B. Tracks of patrols sent out from opposing line to reconnoitre work.



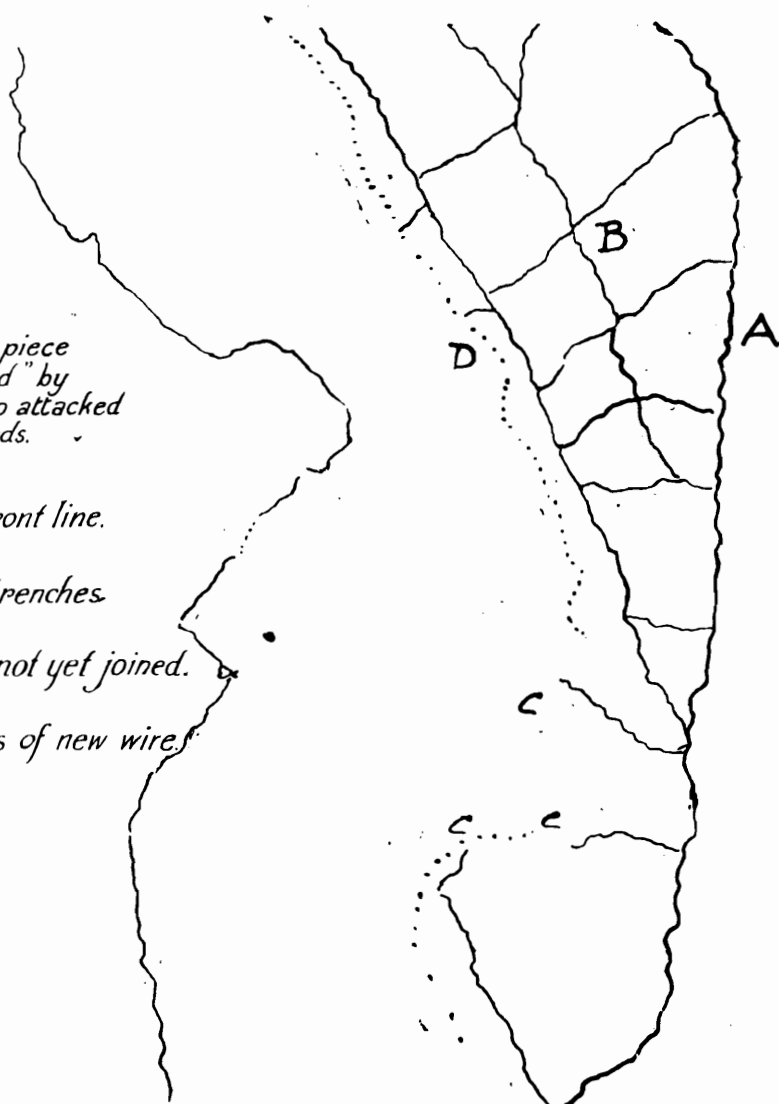
Gain of a large piece of "No Man's land" by the enemy, who attacked shortly afterwards.

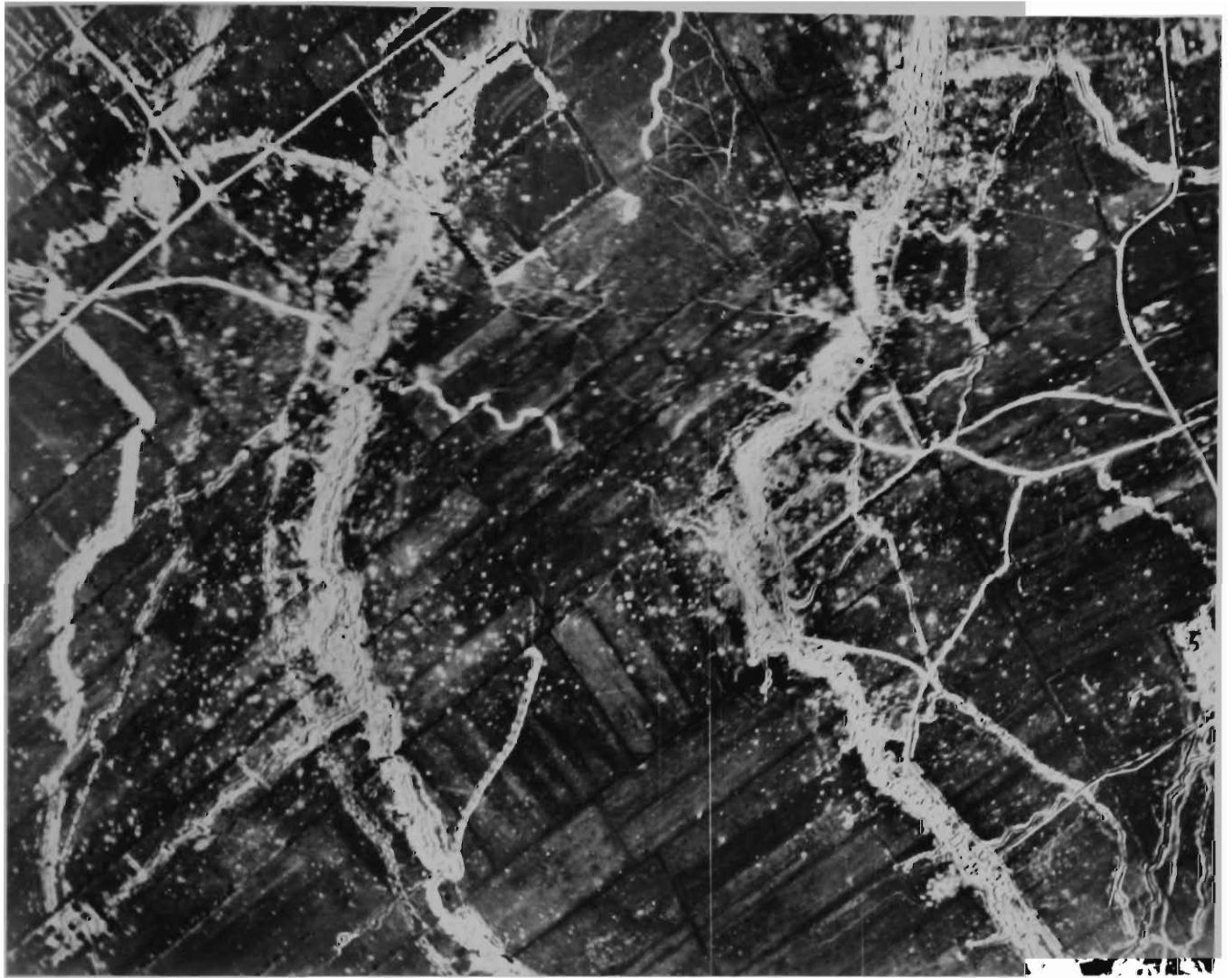
A. Old Front line.

B. New trenches

C. Saps not yet joined.

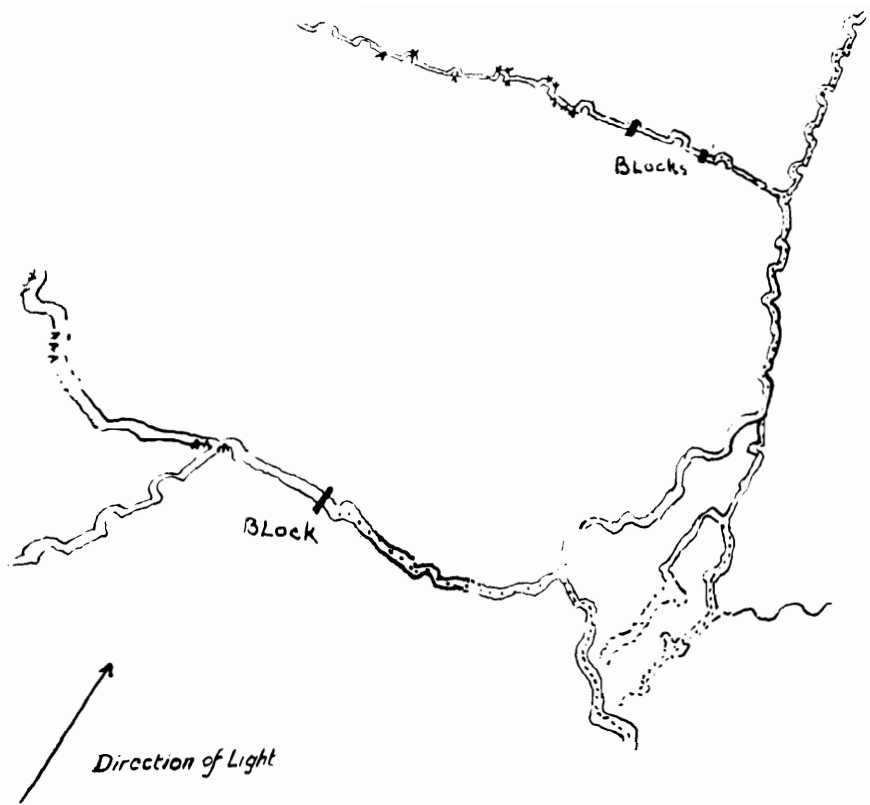
D. Posts of new wire.




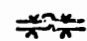


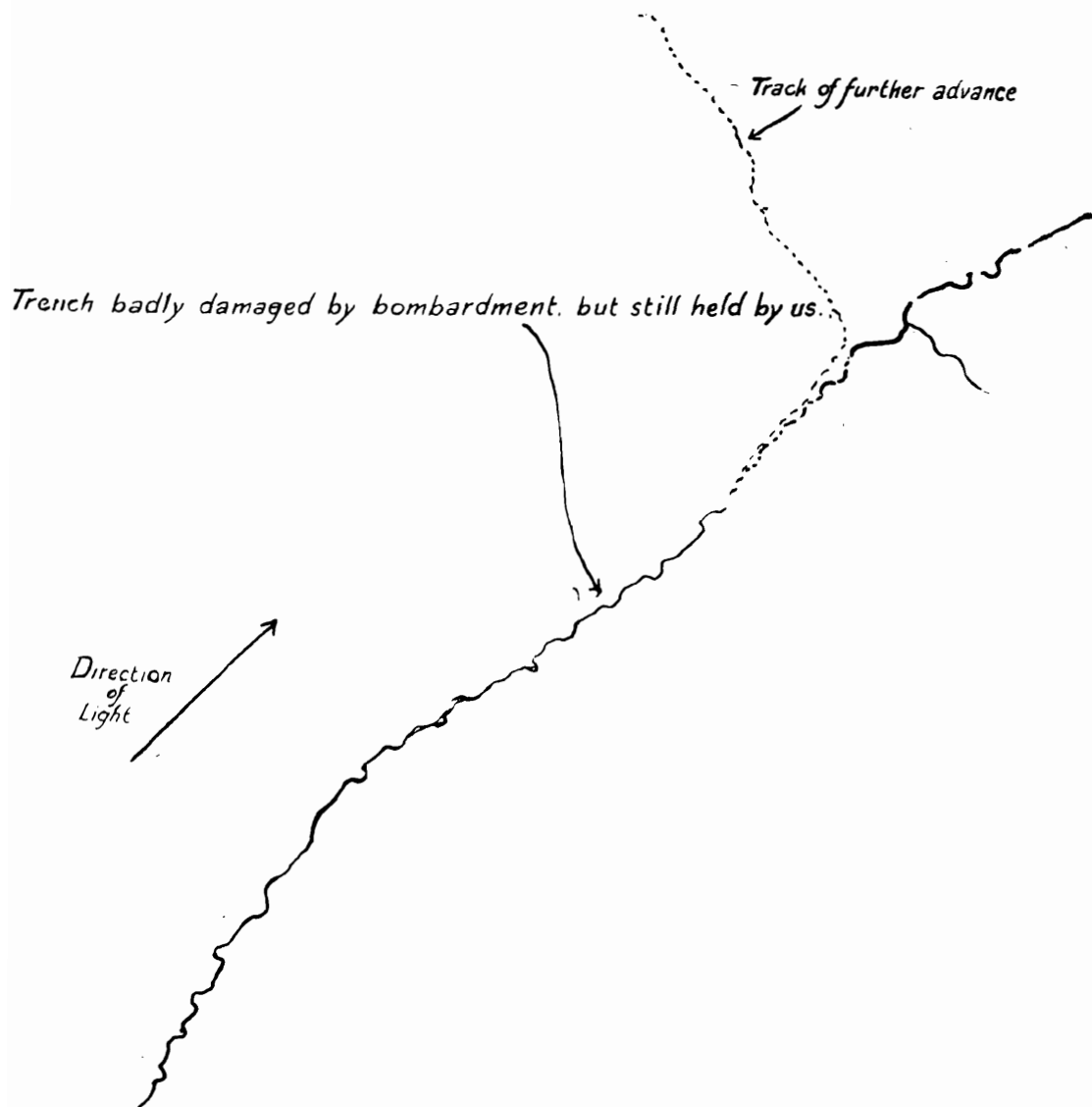
TRENCH CONSTRUCTION DURING A BATTLE.
BOMBING. BLOCKS.

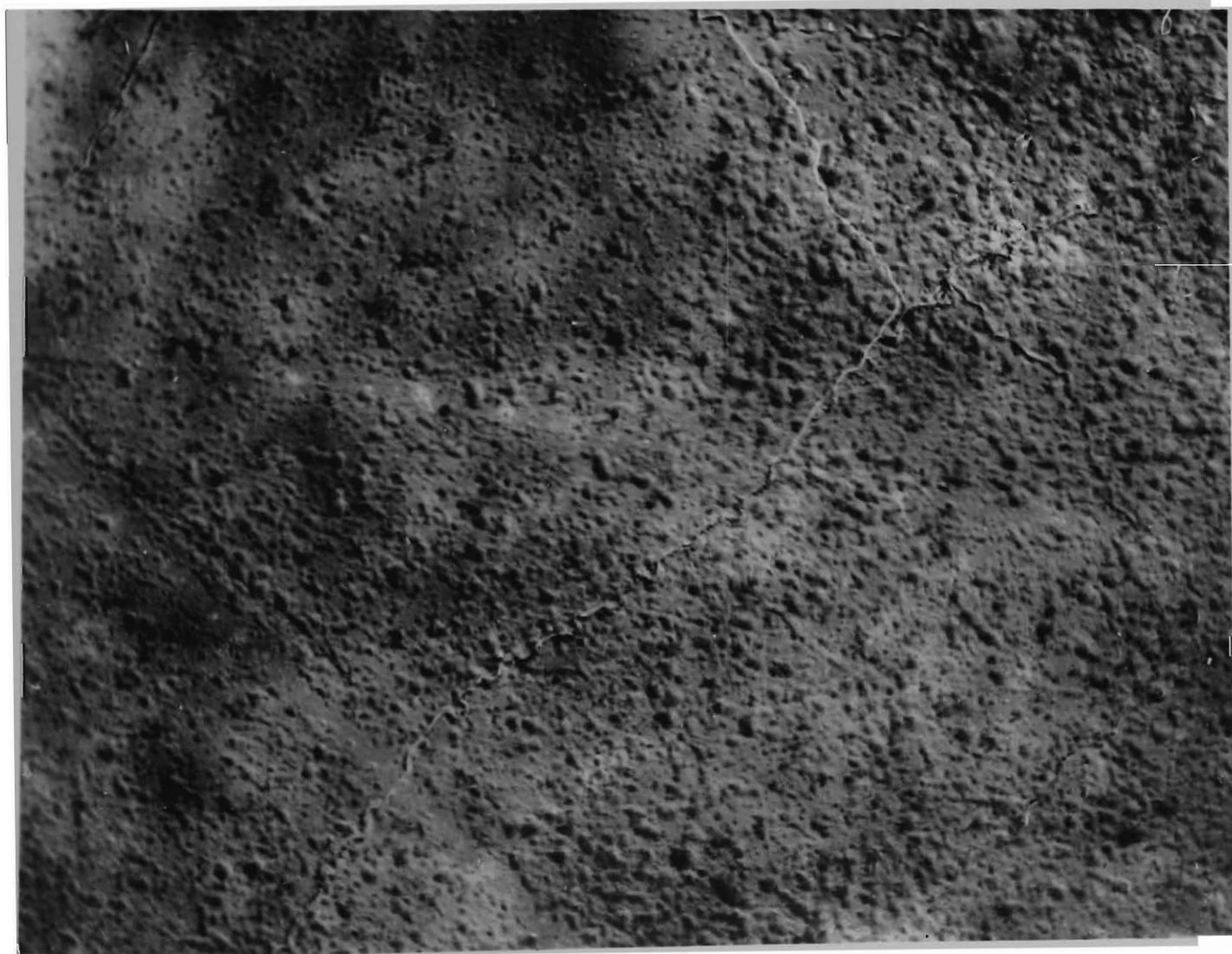
AREA :—River Ancre to River Somme.



Men in Trenches, bombing.

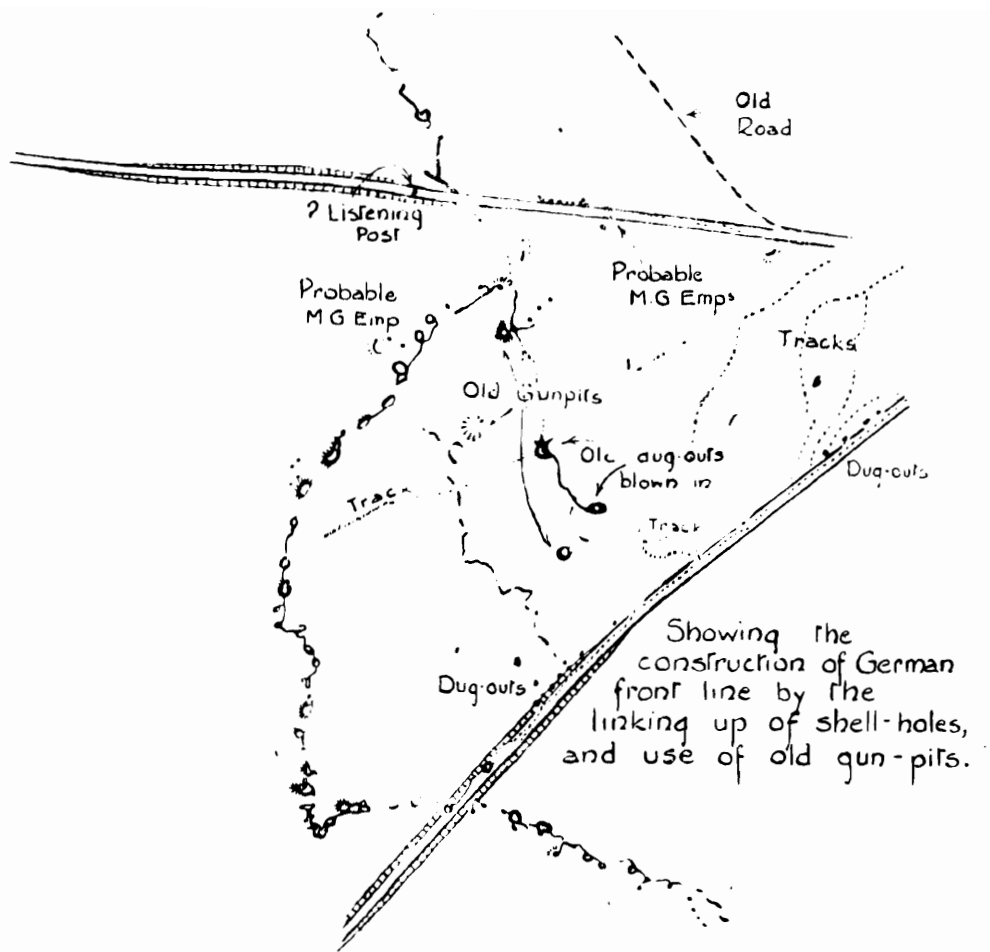
-  *British.*
-  *Germans.*



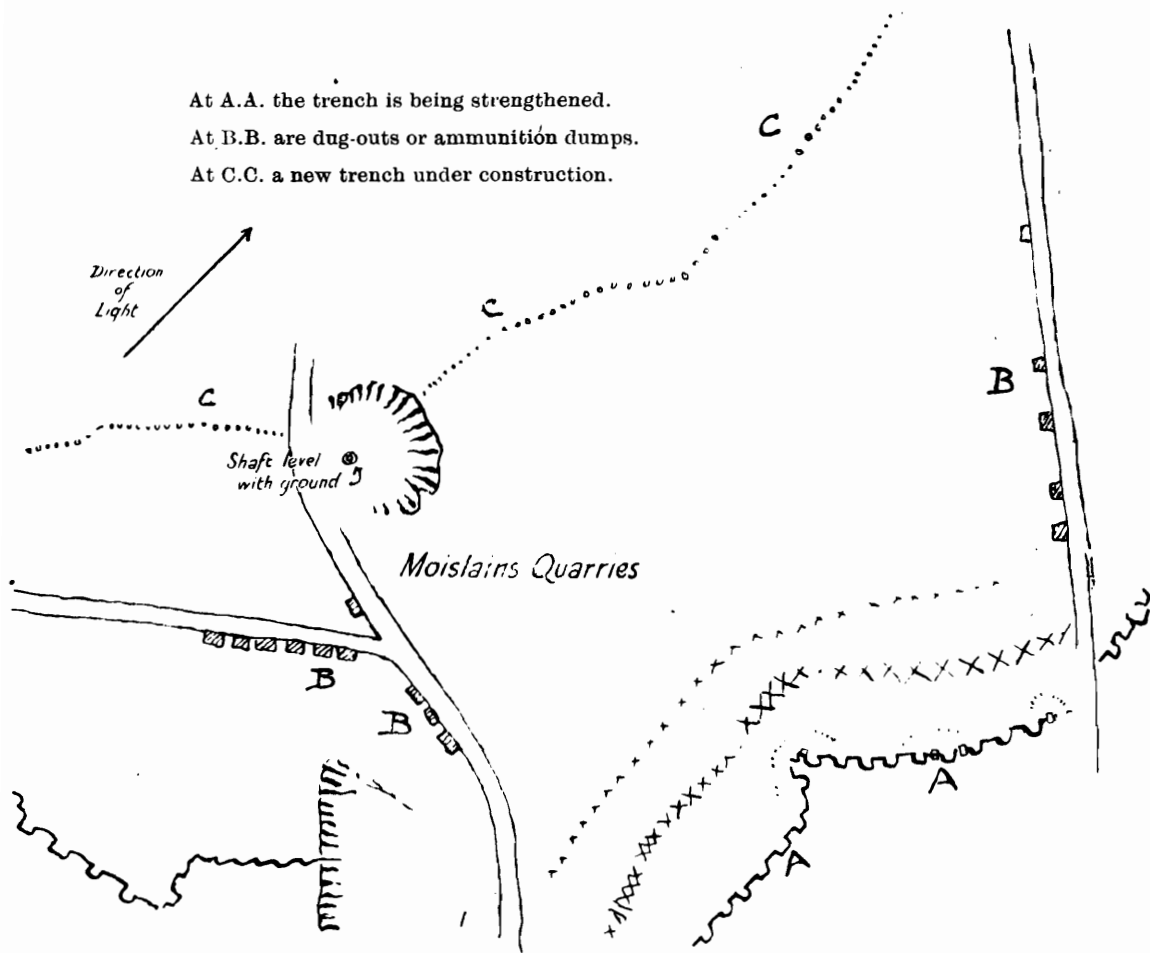


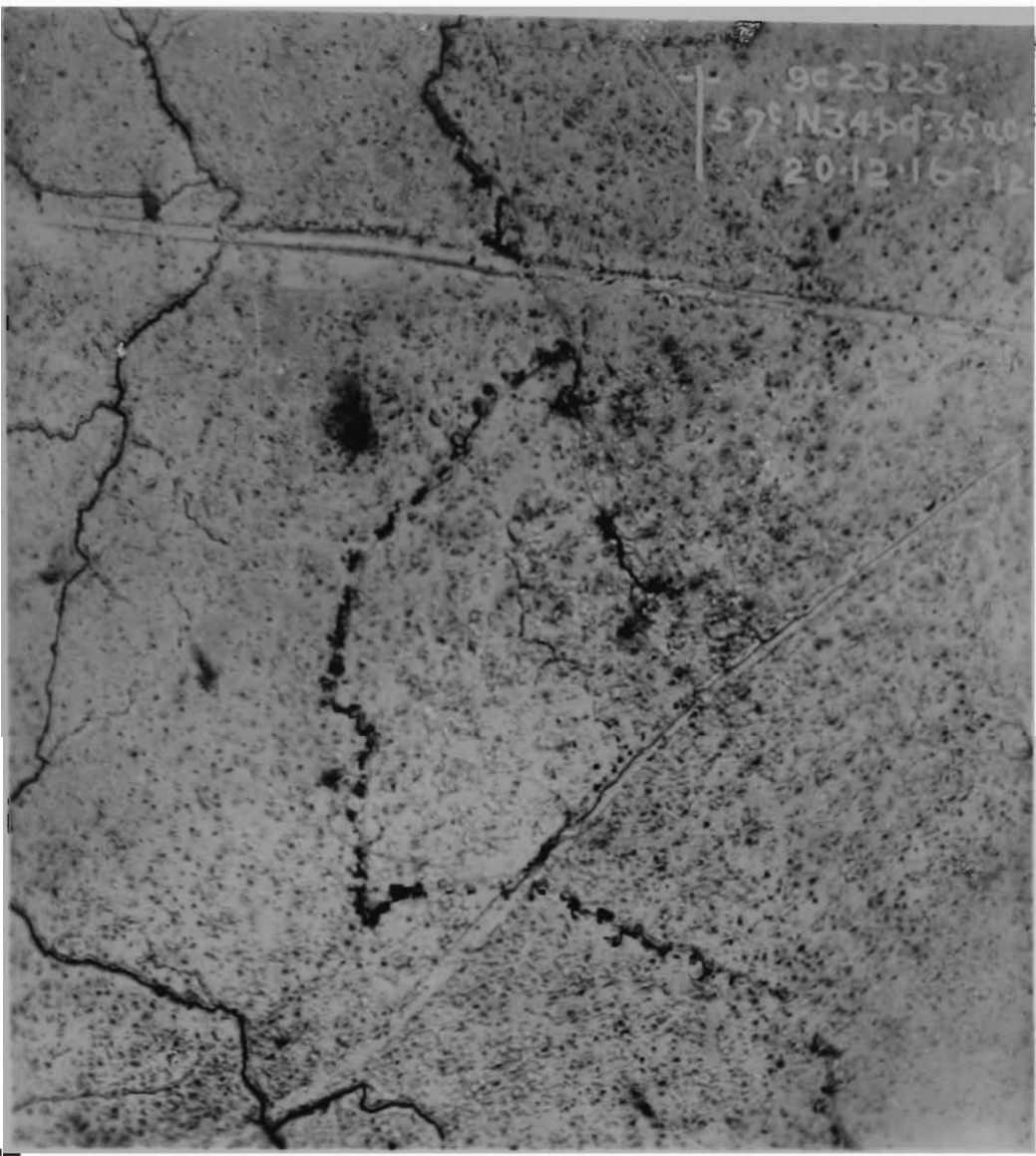
LINKING UP SHELL HOLES.

AREA :—River Ancre to River Somme.



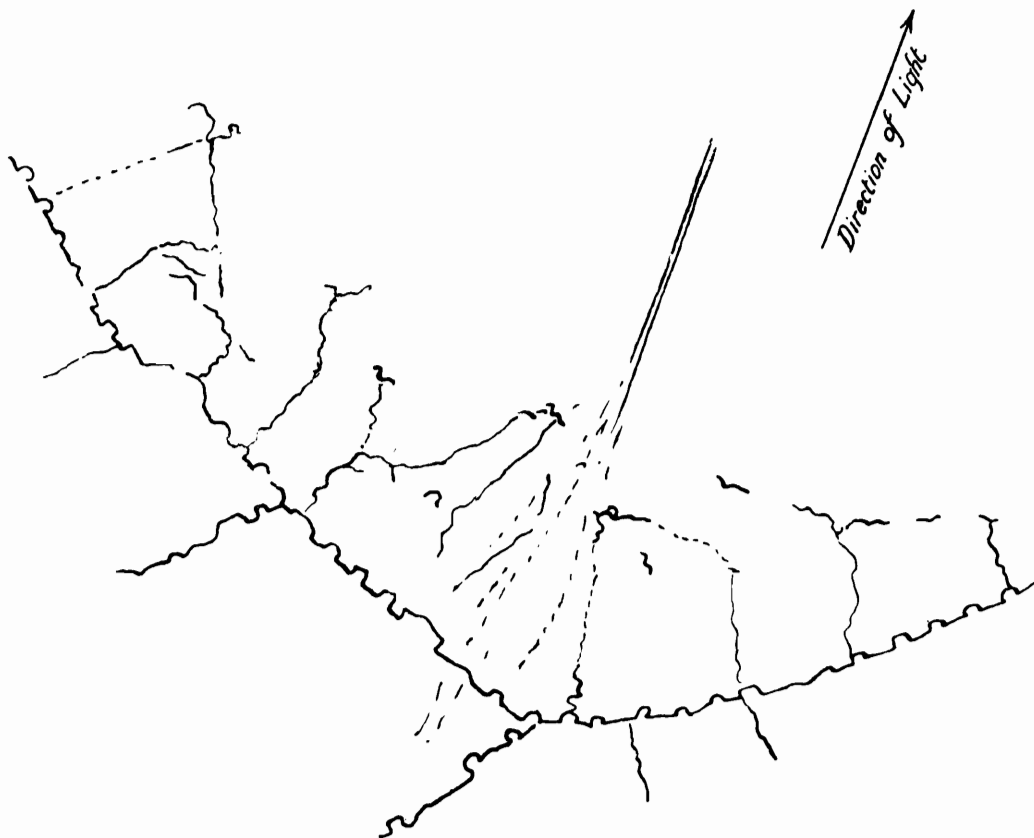
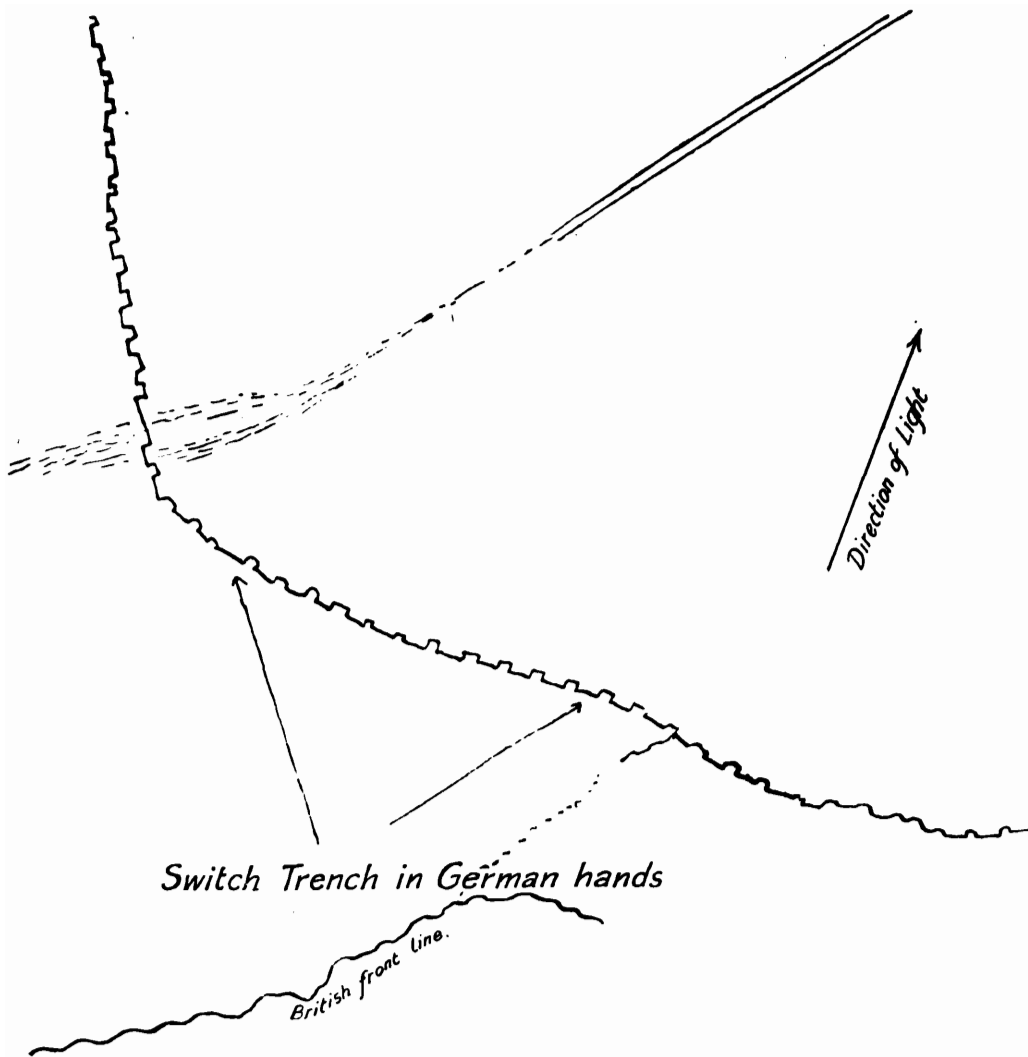
At A.A. the trench is being strengthened.
 At B.B. are dug-outs or ammunition dumps.
 At C.C. a new trench under construction.





TRENCH BEFORE AND AFTER CAPTURE.

AREA :—River Ancre to River Somme.



Switch Trench in our hands. Saps being pushed forward and linked up, preparatory to a further advance.

These photographs illustrate the importance of ascertaining the exact position of our troops.

