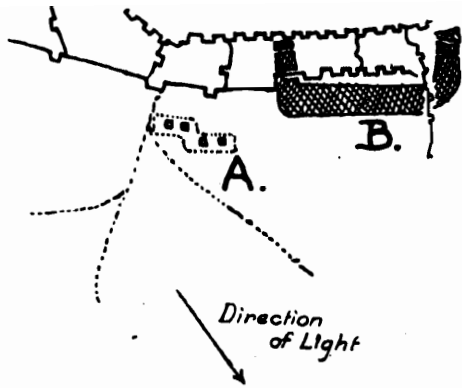


ABNORMAL TYPES OF BATTERY EMPLACEMENT.

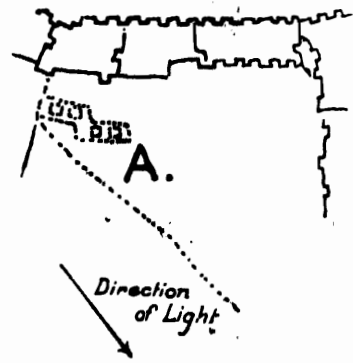
HOWITZER BATTERY DUG-IN.  
EMPLACEMENT TUNNELLED UNDER A RAILWAY EMBANKMENT.  
“ A PIECES.”

*AREA* :—River Scarpe to River Ancre.

A.—Howitzer battery dug-in.  
B.—Wire.

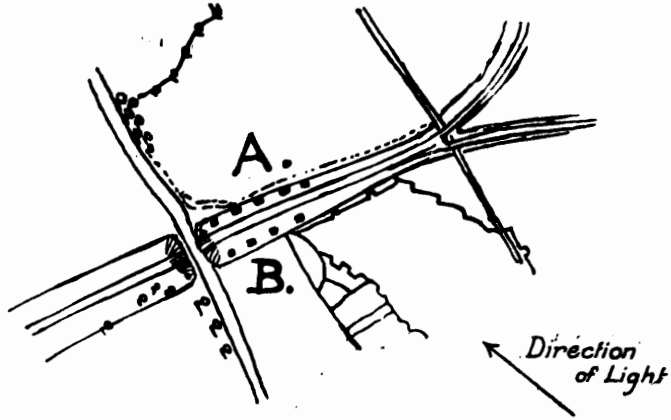


A. same battery camouflaged



EMPLACEMENT TUNNELLED UNDER A RAILWAY EMPLACEMENT.

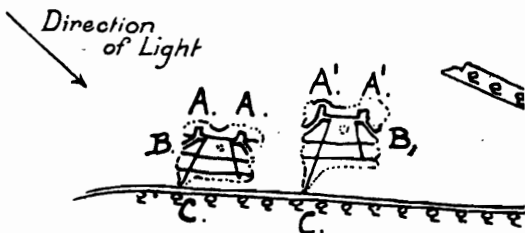
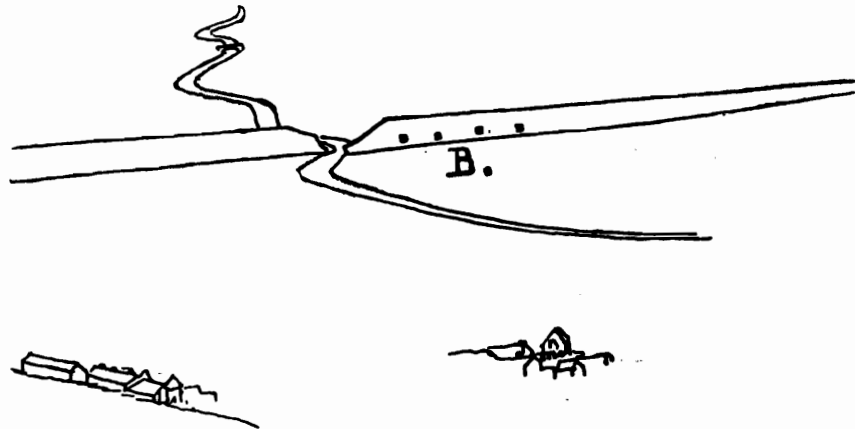
A.—Entrances.  
B.—Ports.



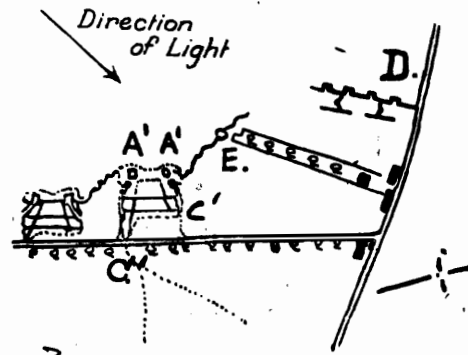
OBLIQUE PHOTOGRAPH OF ABOVE.

B.—Ports.

The embankment is very high. Compare with houses in the foreground.



1.

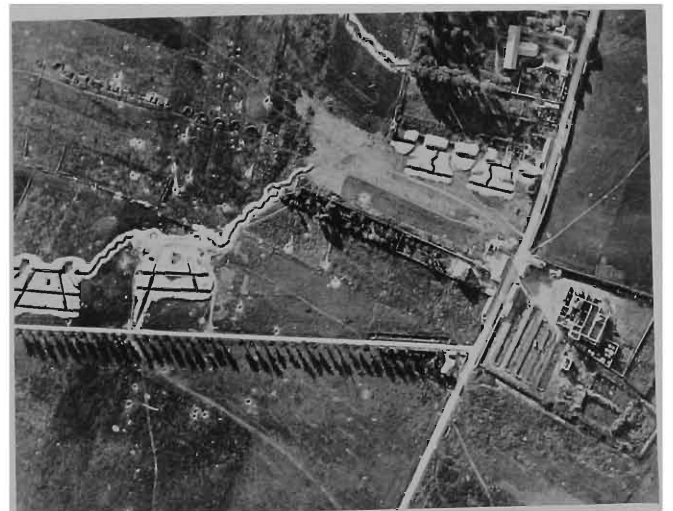
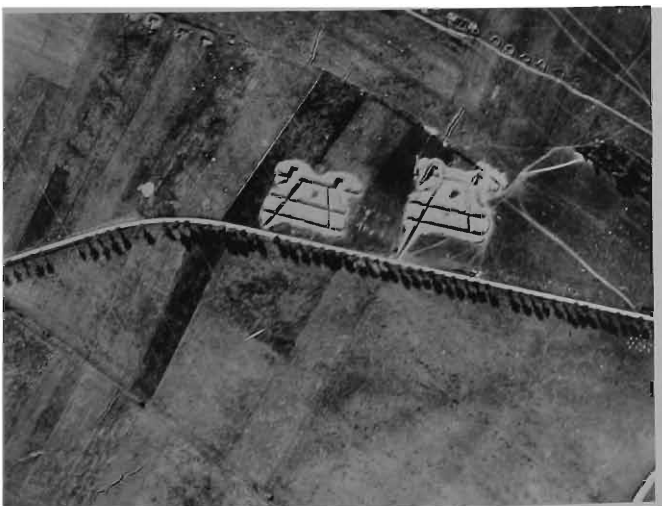
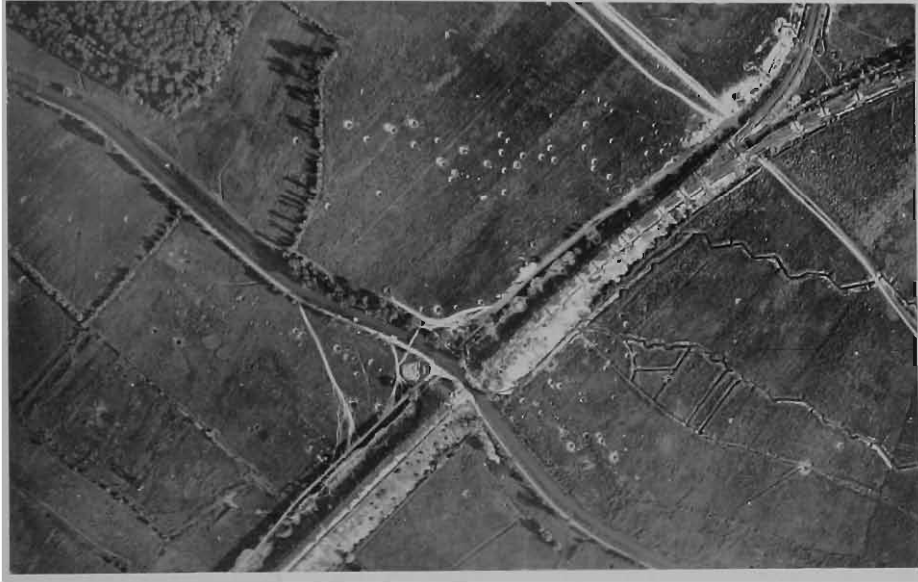
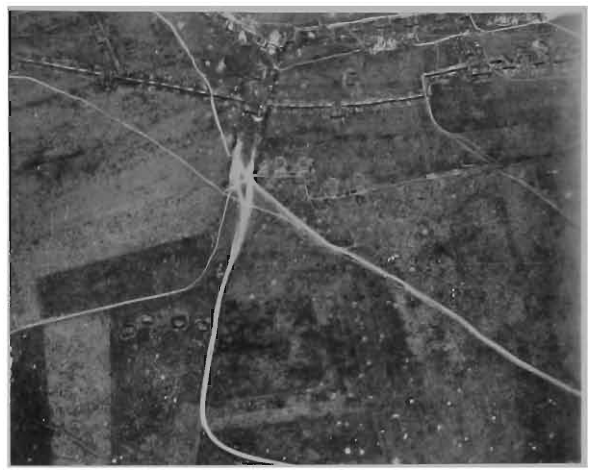


2

"A Pieces"

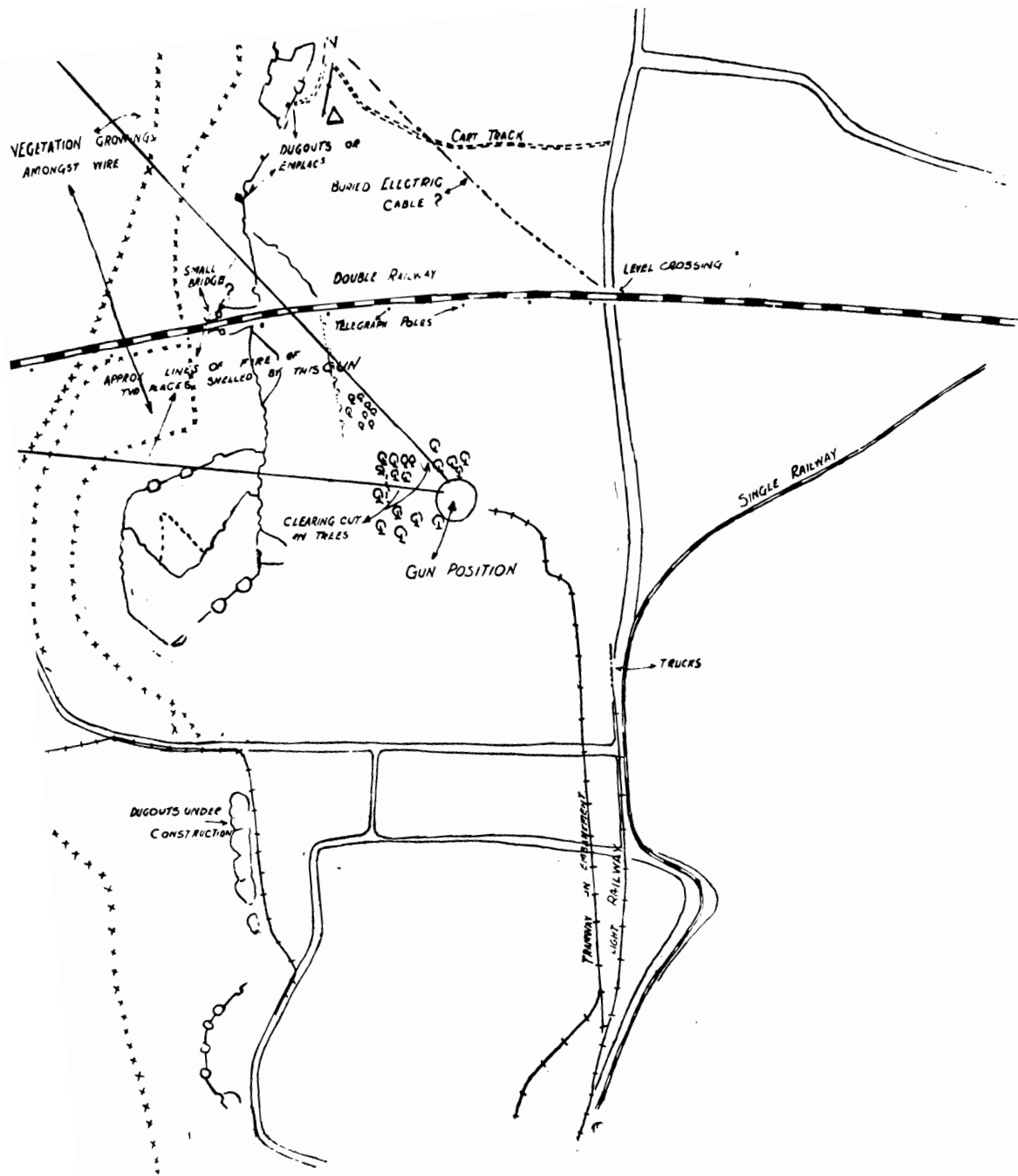
1. A.A.—Gun-pits uncovered.
- B.—Ramp to run guns in.
- C.—Inclined trench from road.

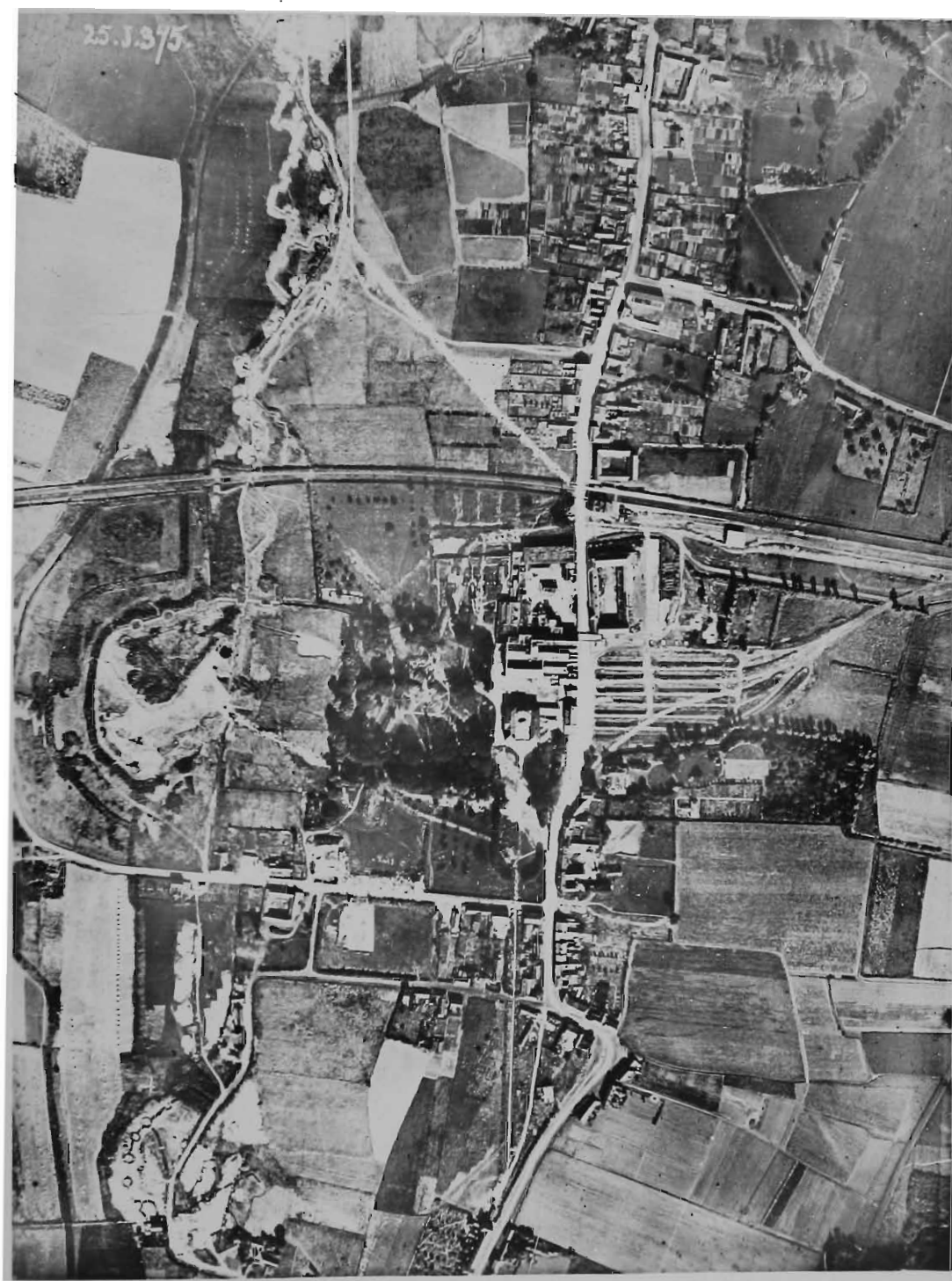
2. Northern "A Piece" occupied.
- A'.A'.—Covered pits.
- C'.C'.—Tracks where guns have been run in and ammunition brought up.
- D.—"Aeroplane" emplacement.
- E.—Battery commander's dug-out.



HEAVY GUN POSITION.

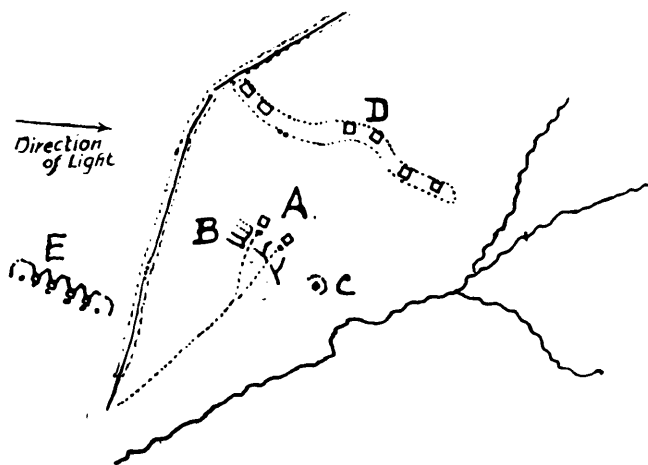
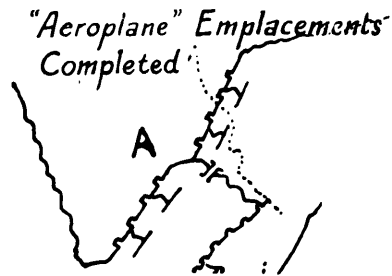
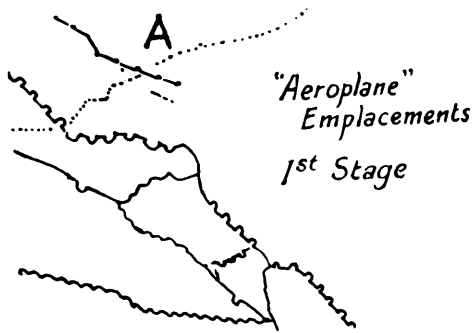
*ARÉA* :—Ypres-Comines Canal to La Bassée Canal.





**“ AEROPLANE ” EMBLACEMENTS.  
HEAVY HOWITZER PITS.  
EMBLACEMENT UNDER CONSTRUCTION.**

*AREA* :—River Scarpe to River Ancre.

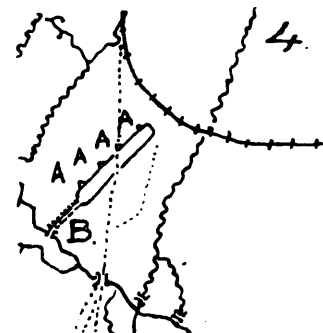
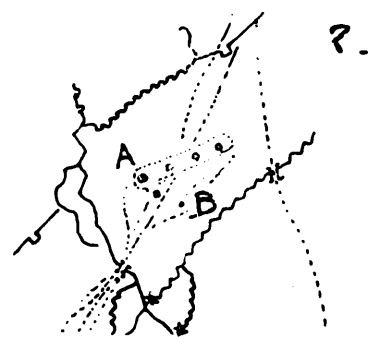
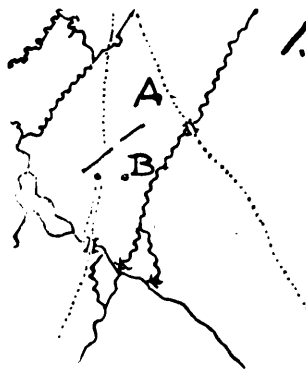


- A. Emplacement for heavy Howitzers.
- B. Trenches for men and ammunition.
- C. Battery commander's dug-out.
- D. Six-gun battery in an artificial bank.
- E. Emplacement with heavy cover cut away in "V"s in front of the pits.

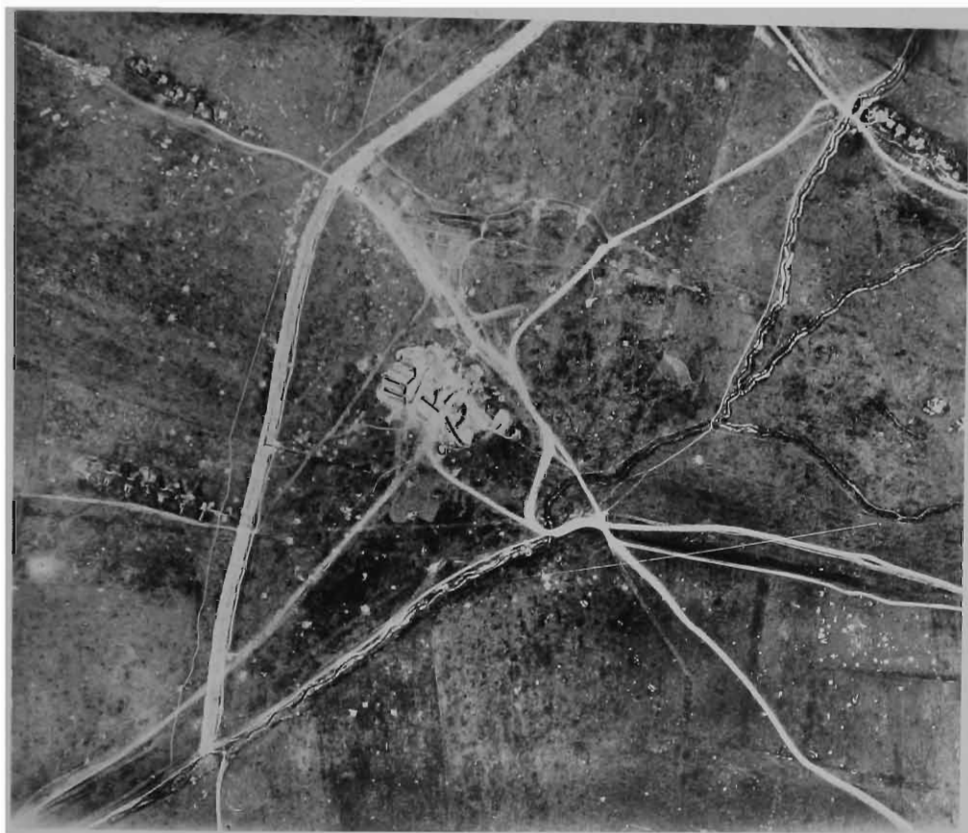
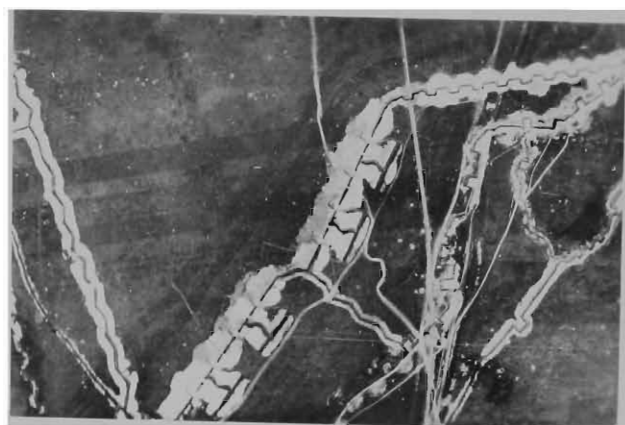
EMPLACEMENT UNDER CONSTRUCTION.

1. A.—First trench dug.  
B.—Entrances to dug-outs under the road.
2. A.—3 pits covered, 1 still uncovered.  
B.—Dug-outs further advanced.
3. Pits covered over and dug-outs camouflaged.
4. A A A A.—Blast marks.  
B.—Covered trench leading to communication trench.

The road has been continued over and through the emplacement to prevent signs of use up to, but not beyond, the battery.



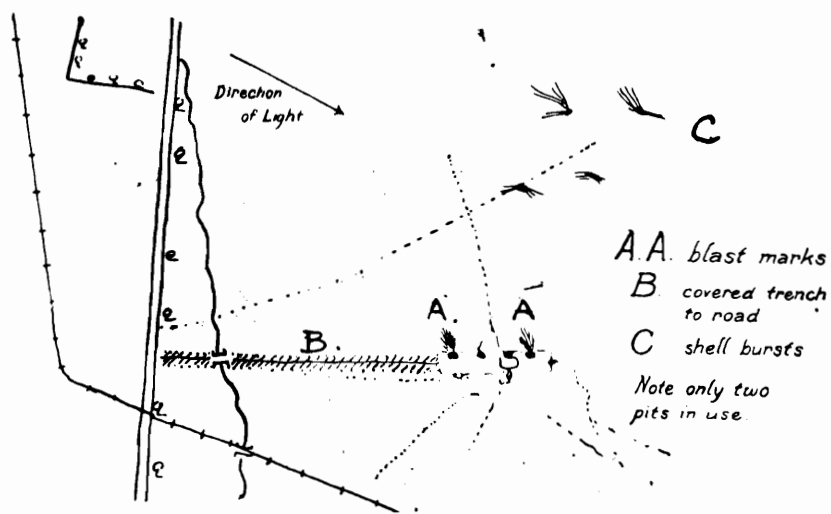
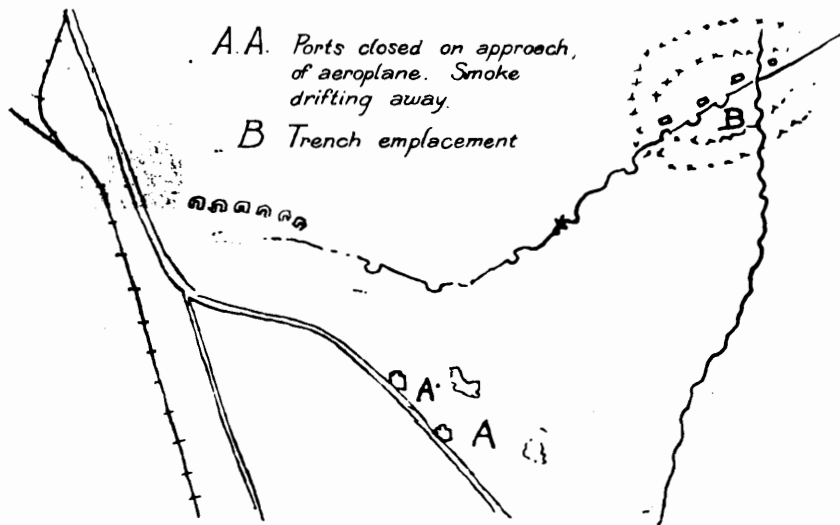
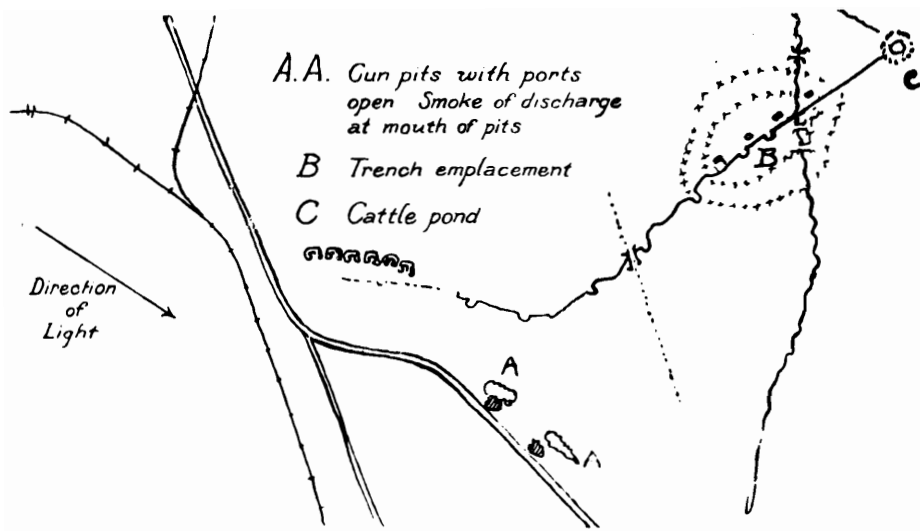


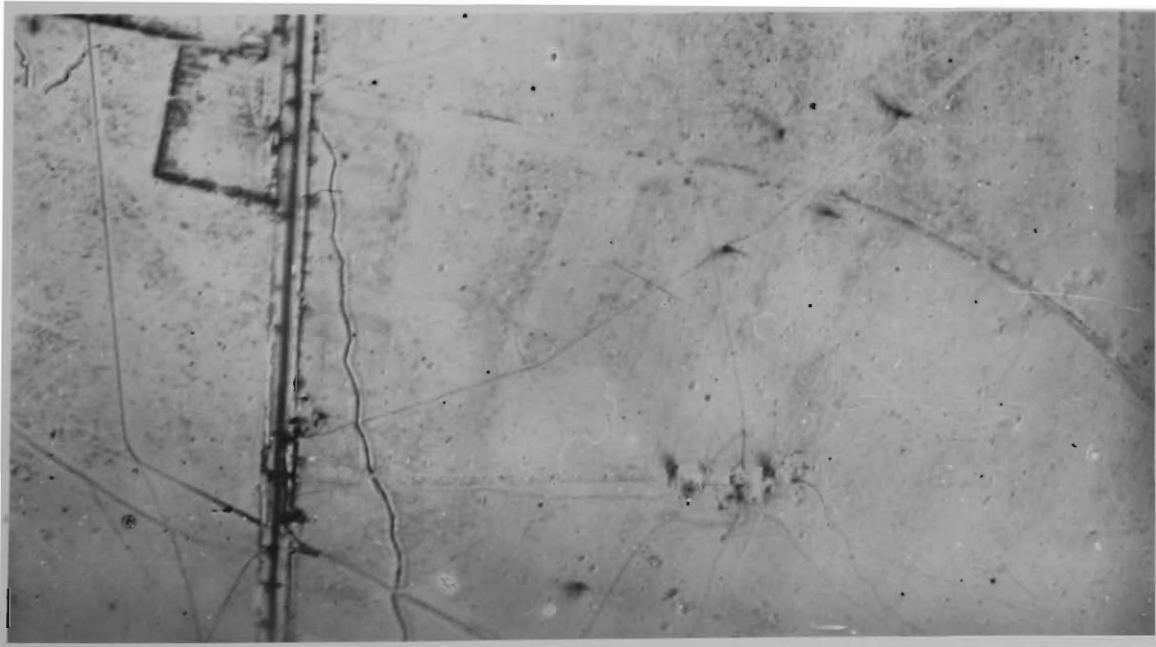
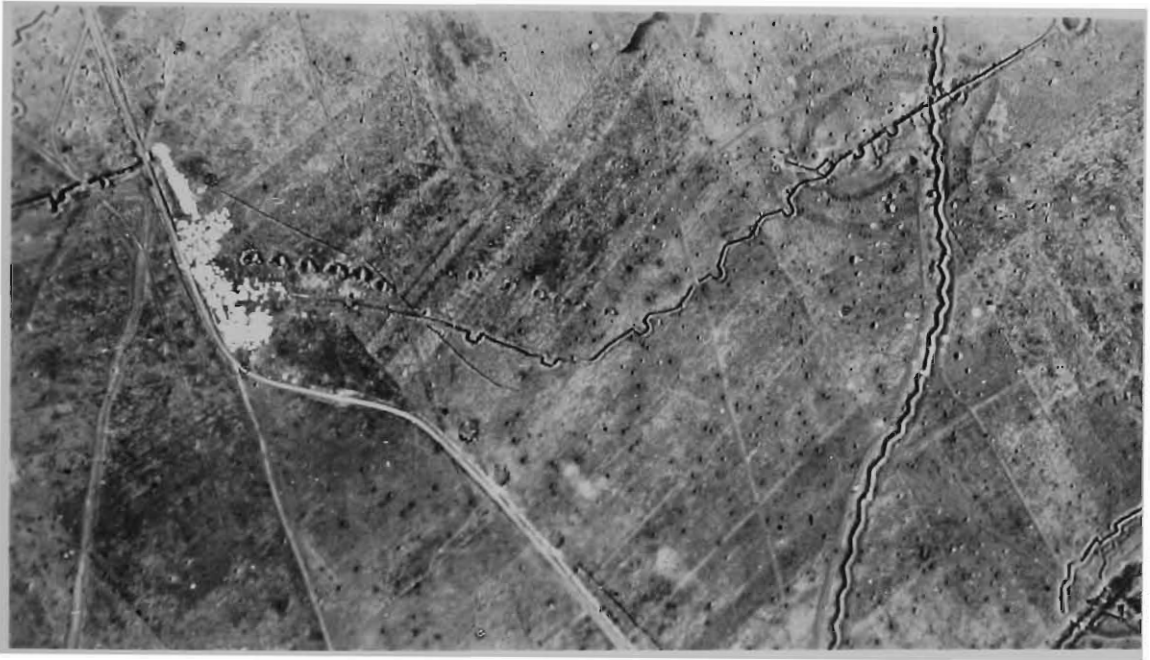
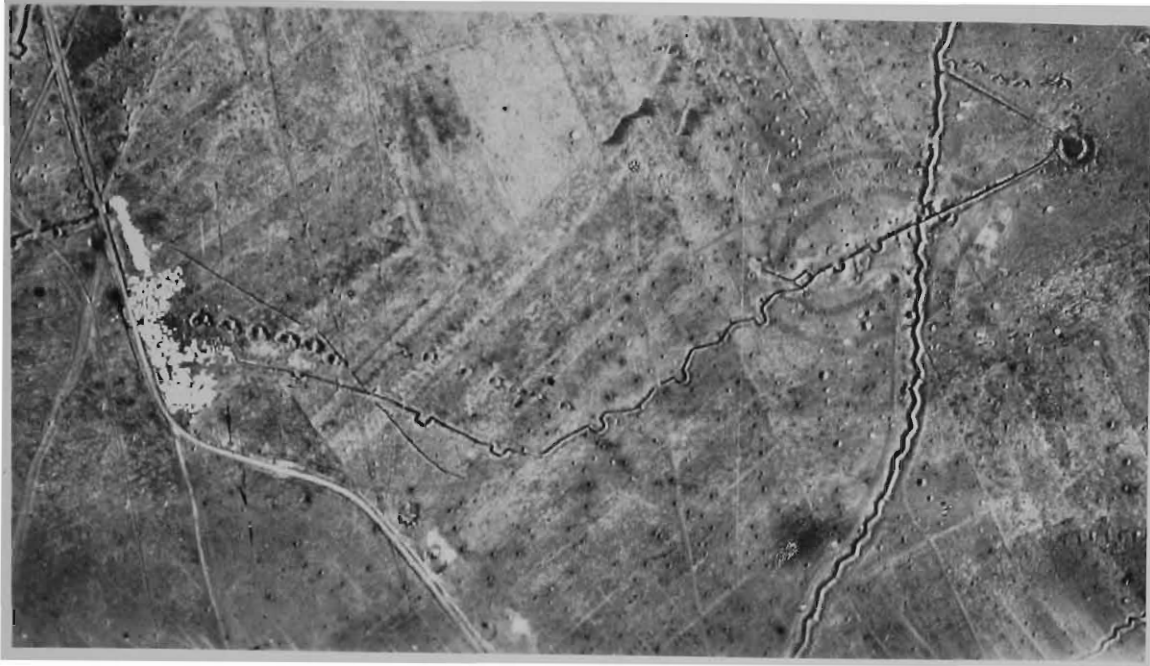


*Emplacement under construction.*



GUNS FIRING.  
BLAST MARKS IN SNOW.  
*AREA* :—River Scarpe to River Ancre.

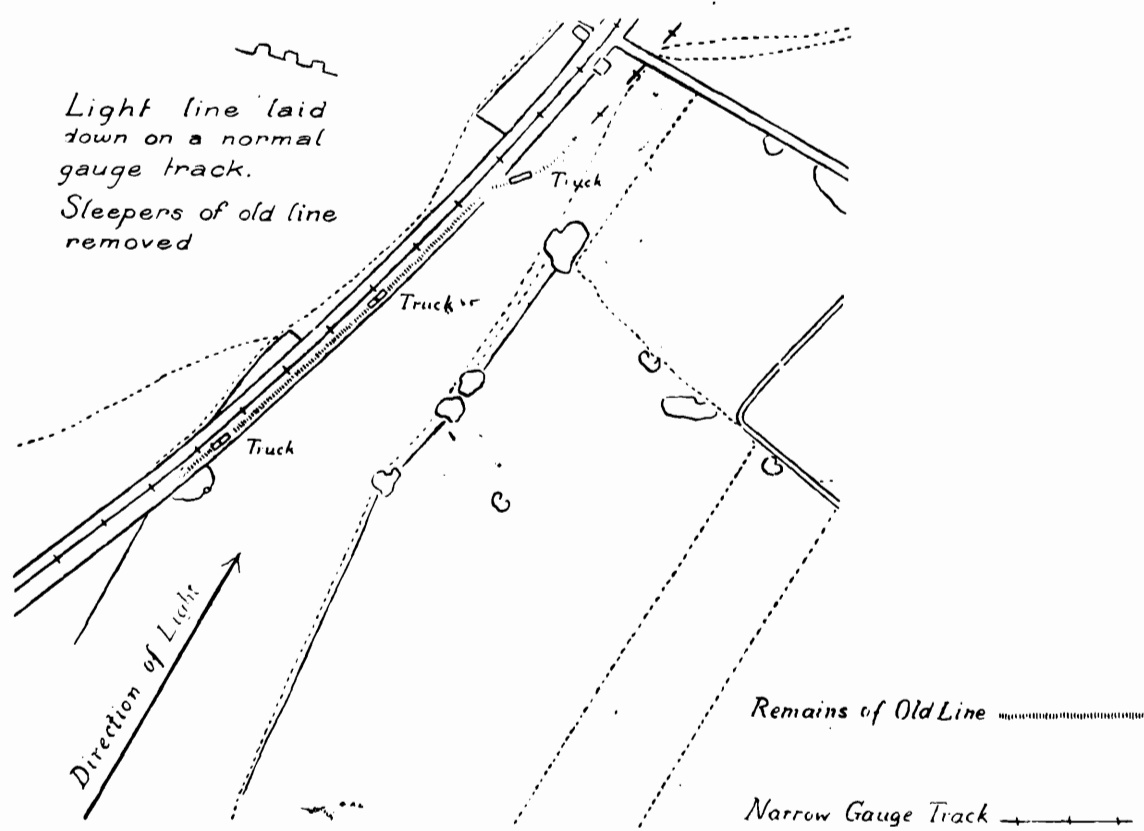
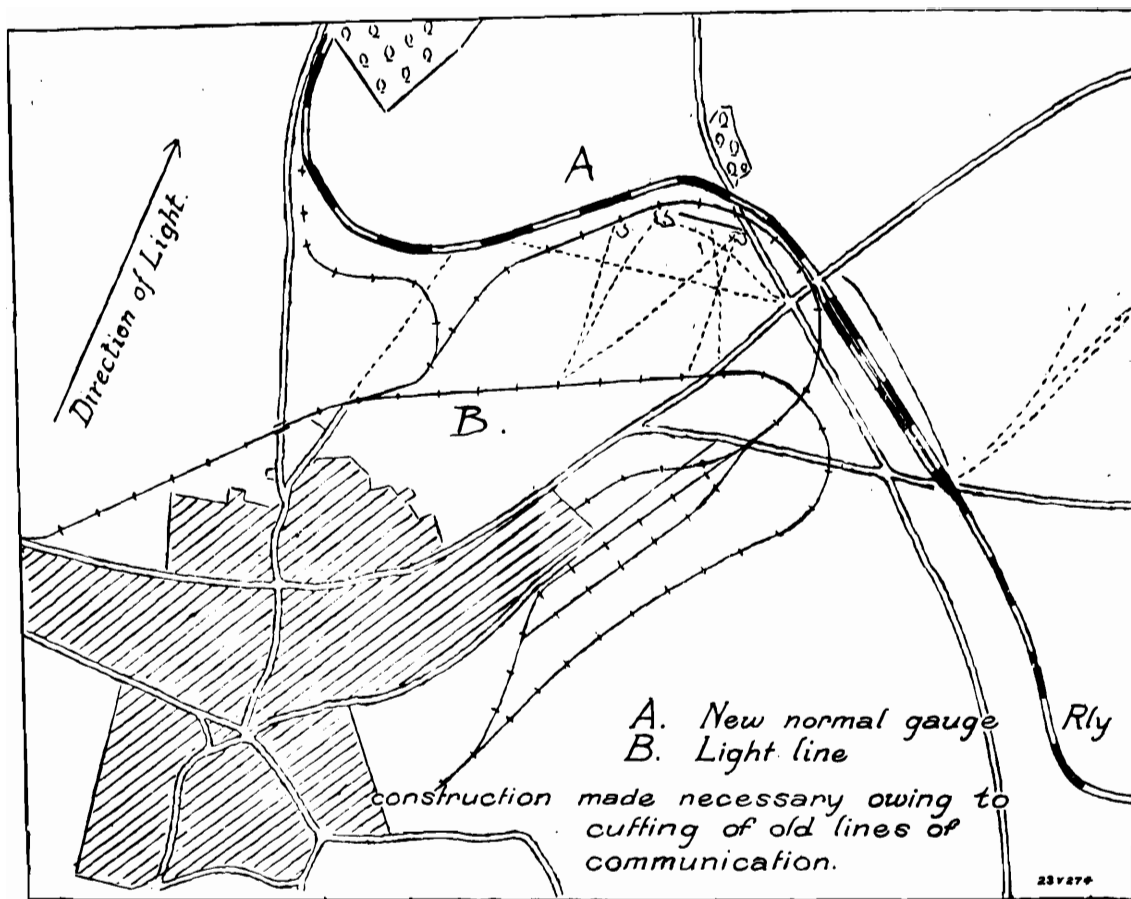


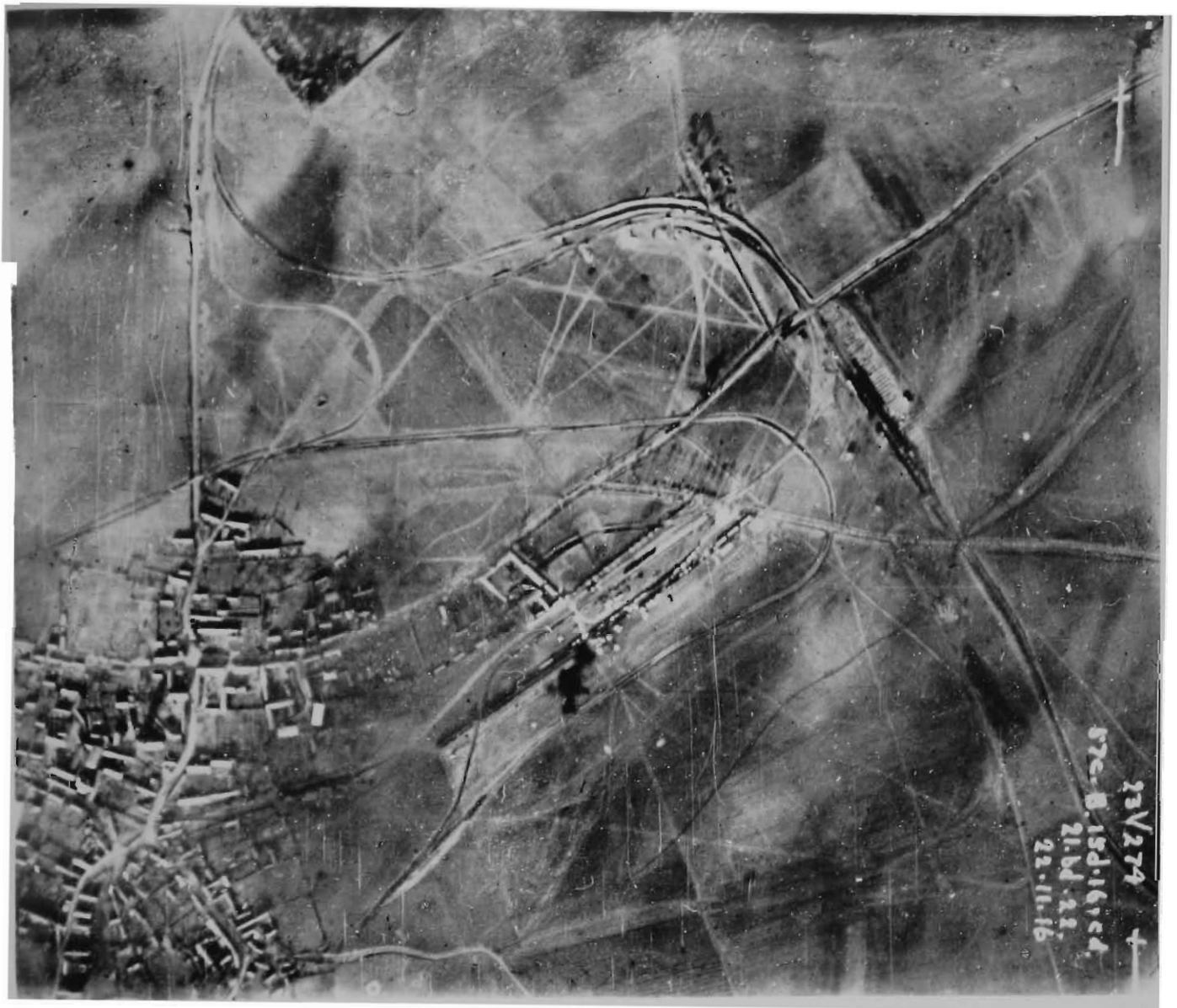


NORMAL GAUGE RAILWAY.

LIGHT RAILWAY.

*AREA* :—River Scarpe to River Ancre.





TRENCH TRAMWAY.

0·60 M. LIGHT RAILWAY. TRACKS.

*AREA*:—La Bassée Canal to River Scarpe.  
River Scarpe to River Ancre.





